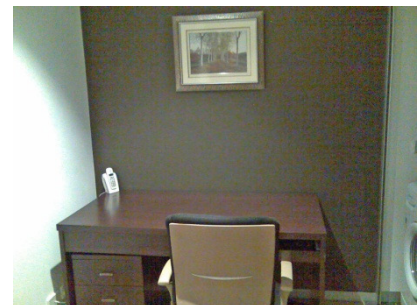


## 'Chevron' 539 St Kilda Rd, Melbourne



Located on the corner of St Kilda Road and Commercial Road the Chevron apartments are Melbourne's newest residential complex. Within only a few minutes walk to Chapel Street, South Yarra; Fitzroy St, St Kilda; Albert Park Lake and a short tram ride to Melbourne's CBD this residential complex offers you variety at your doorstep.

This is the ultimate city edge apartment with tasteful new furnishings, one bedroom, superb galley style kitchen, open plan living dining with sofa bed, floorboards throughout, european laundry, separate study and a balcony with adjustable shutters to ensure your privacy. This outstanding development offers gardens with entertainment and barbeque areas, heated pool, fully equipped gym and excellent residential security. Secure car parking is available.



Weekly rental includes all utility connections and ongoing usage charges, telephone connection, line rental, local telephone calls, and a complimentary Welcome Hamper.