

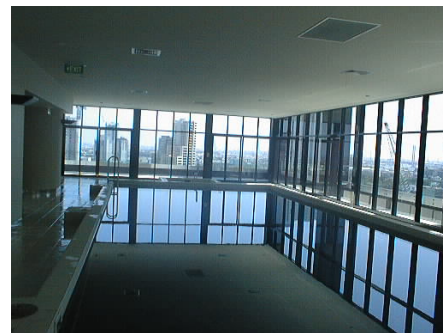
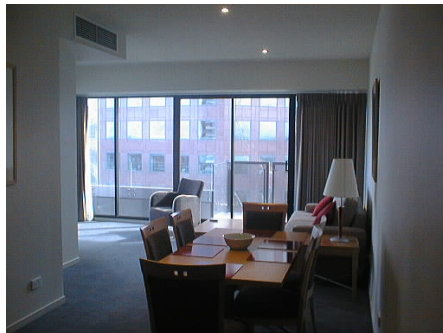
## 'Gallery Towers' 33 City Road, Southbank



Situated on City Road, these spacious fully furnished apartments in the heart of Melbourne are close to Melbourne's Arts Centre, Southbank, Botanical Gardens and the CBD and are within a few minutes walk of the St Kilda Road tram.



These tastefully presented and furnished two bedroom apartments comprise a master bedroom with walk-in robe and en-suite with bath, second bedroom, large main bathroom, an open plan modern kitchen with dishwasher and gas cooking. A separate laundry and large balcony complete the picture. Each apartment has a security entrance and access to the 20 metre pool, spa and gymnasium located on the 18<sup>th</sup> floor.



Weekly rental includes all utility connections and ongoing usage charges, telephone connection, line rental, local telephone calls and a complimentary Welcome Pack.