

'Liberty Towers' 620 Collins St, Melbourne

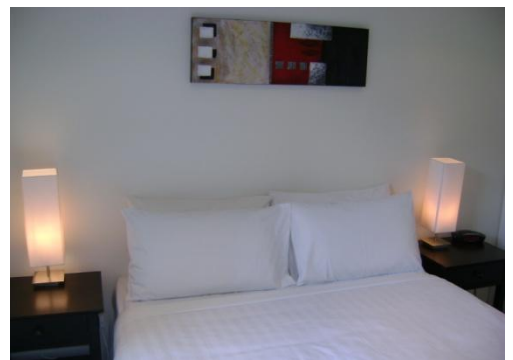
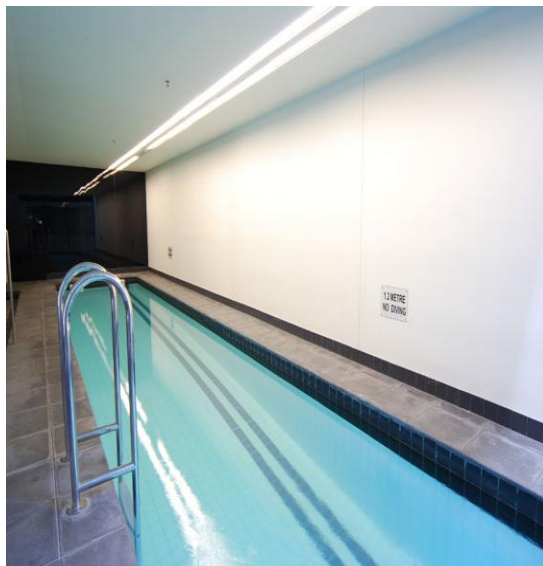


Located near the corner of Spencer Street you will be within easy access of Melbourne's shopping district, restaurants, cafes and bars, as well as being a short stroll from all the parkland, sporting and nightlife facilities the Dockland's precinct has to offer.

Situated in the heart of Melbourne's central business district, this fully furnished two bedroom apartment (second bedroom is a guest room) offers great city views and an abundance of natural light with a large open plan living area.



The residential complex has excellent security including video phone, restricted floor access, and on-site caretaker. The building also features resident's pool, spa and gym, and retail outlets on the ground floor.



K113, 63 Turner Street
Port Melbourne VIC 3207
Ph: +61 3 9279 7200
Fax: +61 3 9646 0474
www.corporatekeys.com.au