

'Eureka Tower' 7 Riverside Quay, Southbank



Located just moments away from Southbank Promenade restaurants, cafes and shops, the Arts Centre, Royal Botanic Gardens, Federation Square and St Kilda Road, Eureka Tower brings world-class living to the heart of Melbourne.



This new corporate apartment is tastefully furnished and includes a luxury kitchen with European appliances, one bedroom with en-suite, second powder room, separate laundry and spacious light-filled open-plan living area which opens out onto the balcony with sensational views.



This residential complex has excellent security including video phone and restricted floor access, 24 hour security and on site concierge.



The building features a 25 metre lap pool, fully equipped gymnasium, a sauna and a private 30 seat cinema. Secure car parking is available.

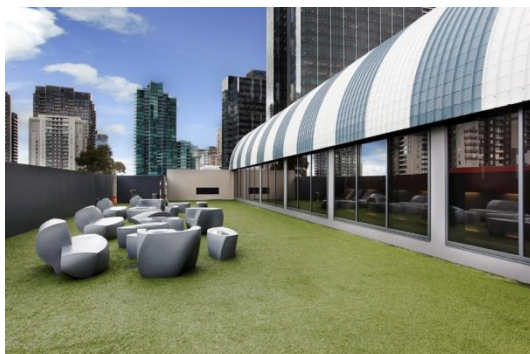
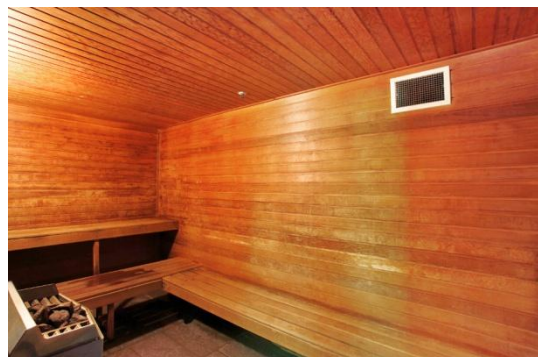
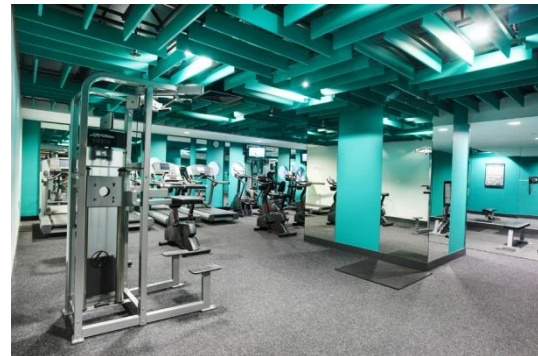


K113, 63 Turner Street
Port Melbourne VIC 3207
Ph: +61 3 9279 7200
Fax: +61 3 9646 0474
www.corporatekeys.com.au

Ref: 6406
Property Rating: Business Class

Weekly rental includes all utility connections and ongoing usage charges, telephone connection and line rental including unlimited local & national telephone calls.

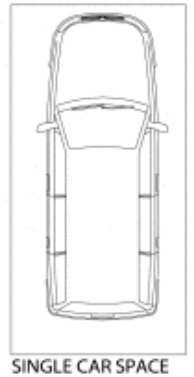
'Eureka Tower' 7 Riverside Quay, Southbank



K113, 63 Turner Street
Port Melbourne VIC 3207
Ph: +61 3 9279 7200
Fax: +61 3 9646 0474
www.corporatekeys.com.au

Property Profile

**‘Eureka Tower’
7 Riverside Quay, Southbank**



K113, 63 Turner Street
Port Melbourne VIC 3207
Ph: +61 3 9279 7200
Fax: +61 3 9646 0474
www.corporatekeys.com.au