

Two Storey Townhouse Unit 6, 7 Sanders Place Richmond

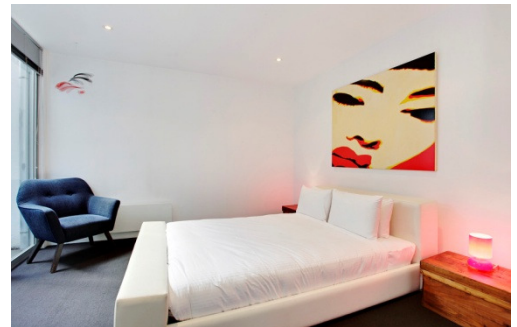
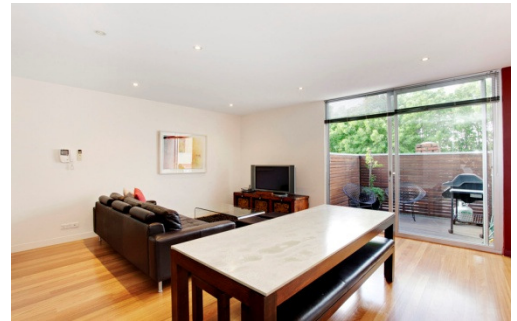


The property is impeccably furnished throughout, with designer furniture and artwork and quality European appliances. Secure parking for one car is included, and access is via a shared private drive behind a security fence.

There is a balcony with city views on the upper storey and a courtyard downstairs.

Weekly rental includes all utility connections and ongoing usage charges, telephone connection, line rental and local telephone calls.

This stunning two bedroom two bathroom Townhouse in the heart of fashionable Richmond is located just back from Church Street, close to up-market restaurants, bars and shops. East Richmond train station is one minute walk away, making an easy five minute commute to central Melbourne.

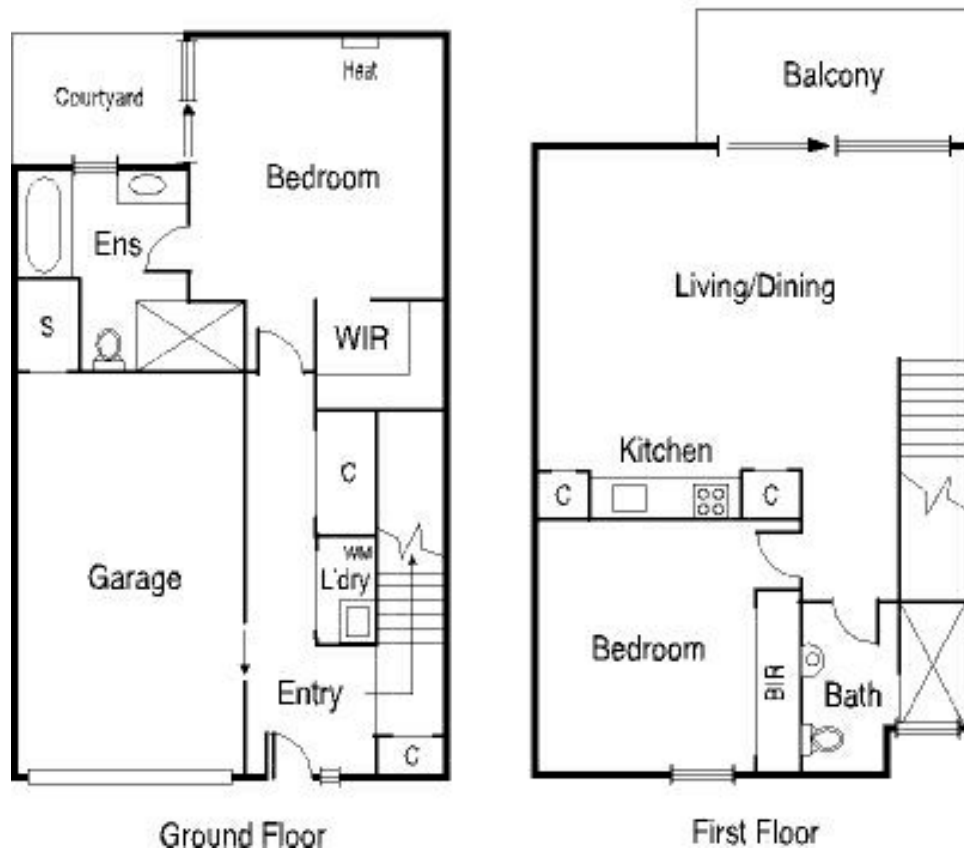


K113, 63 Turner Street
Port Melbourne VIC 3207
Ph: +61 3 9279 7200
Fax: +61 3 9646 0474
www.corporatekeys.com.au

Ref: 6-7
Property Rating: Business Clas

Two Storey Townhouse Unit 6, 7 Sanders Place Richmond

6/7 Sanders Place, Richmond



Property Profile