

'Chevron Green' 539 St Kilda Road



Located on the corner of St Kilda Road and Commercial Road this Chevron apartment is your Melbourne's home away from home.

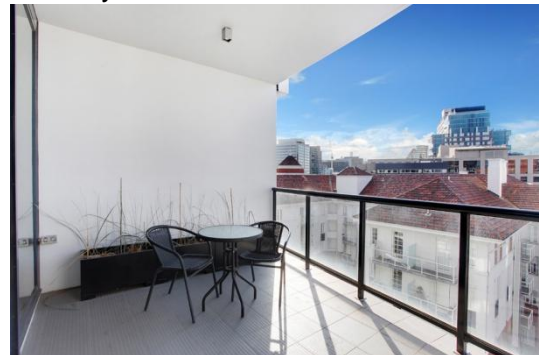
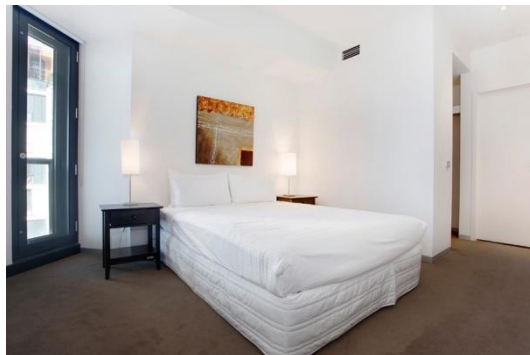
Within only a few minutes walk to Chapel Street, South Yarra; Fitzroy St, St Kilda; Albert Park Lake and a short tram ride to Melbourne's CBD this residential complex offers you variety at your doorstep.



This is the ultimate city edge apartment with tasteful new furnishings, two bedrooms, two bathrooms, superb galley style kitchen, open plan living/dining area, floorboards throughout, European laundry and a balcony with adjustable shutters to ensure your privacy.



This outstanding development offers gardens with entertainment and barbeque areas, heated pool, fully equipped gym and excellent residential security.



K113, 63 Turner Street
Port Melbourne VIC 3207
Ph: +61 3 9279 7200
Fax: +61 3 9646 0474
www.corporatekeys.com.au