

502/232-242 Rouse Street, Port Melbourne



Port Melbourne, the bayside suburb renowned for its cafes and beachside living, is only a short rail ride from the city. This luxury two bedroom apartment is located close to Bay Street amid Port Melbourne's thriving café culture and only 2 minutes walk to the beach.

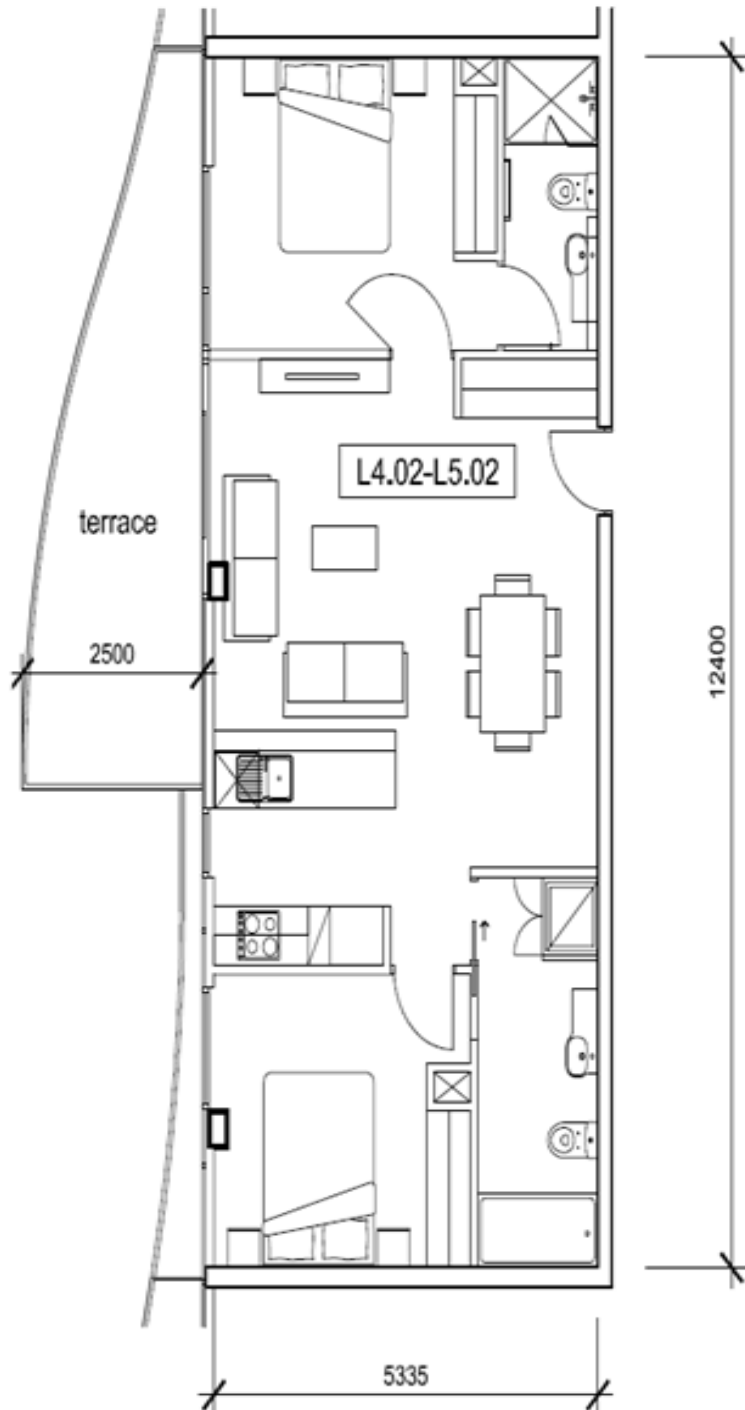
This brand new fully furnished two bedroom apartment has a modern kitchen with dishwasher, an open plan living dining area opening out onto a balcony with beach and city views. Bedrooms with built in robes, two bathrooms and a internal laundry.

The apartment also features a large balcony, with amazing views of the Bay to your left and CBD skyline to your right.



K113, 63 Turner Street
Port Melbourne VIC 3207
Ph: 1300 CORPORATE
Fax: +61 3 9646 0474
www.corporatekeys.com.au

502/232-242 Rouse Street, Port Melbourne Floor Plan



K113, 63 Turner Street
Port Melbourne VIC 3207
Ph: 1300 CORPORATE
Fax: +61 3 9646 0474
www.corporatekeys.com.au

APARTMENT

AREA - 71,8 sq.m.

TERRACE AREA - 13,7 sq.m.