

## 226 Rouse Street, Port Melbourne



Port Melbourne, the bayside suburb renowned for its cafes and beachside living, is only a short light rail ride from the city. This quality two bedroom apartment is located close to Bay Street amid Port Melbourne's thriving café culture and only 2 minutes walk to the beach.

This near new fully furnished two bedroom apartment has a modern galley kitchen with dishwasher, an open plan living dining area opening out onto a leafy aspect with views through to the pool. The master bedroom has built in robes, one bathroom and a European laundry.

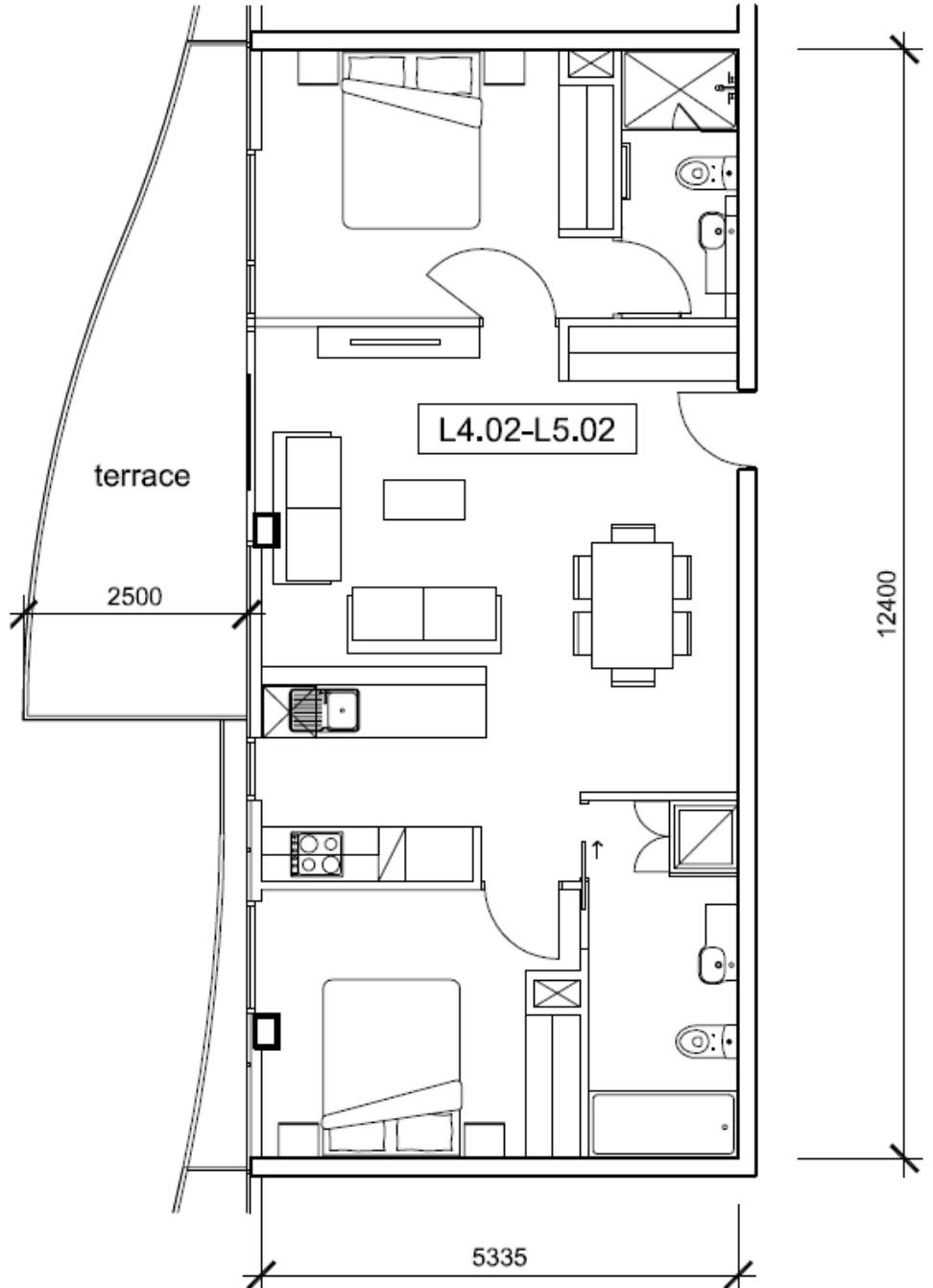
The building features security entrance, an indoor/outdoor heated pool and gym facilities.



K113, 63 Turner Street  
Port Melbourne VIC 3207  
Ph: +61 3 9279 7200  
Fax: +61 3 9646 0474  
[www.corporatekeys.com.au](http://www.corporatekeys.com.au)

## 226 Rouse Street, Port Melbourne Floor Plan

# Property Profile



K113, 63 Turner Street  
Port Melbourne VIC 3207  
Ph: +61 3 9279 7200  
Fax: +61 3 9646 0474  
[www.corporatekeys.com.au](http://www.corporatekeys.com.au)

### APARTMENT

AREA - 71,8 sq.m.

TERRACE AREA - 13,7 sq.m.