

'Eureka Tower' 7 Riverside Quay, Southbank



This luxury apartment is tastefully furnished with top of the range designer pieces and includes a luxury kitchen with European appliances, one bedroom with built in robes and access to the balcony. This superb apartment also has one bathroom, Euro laundry and open plan living and kitchen with walk in pantry.



Located just moments away from Southbank Promenade restaurants, cafes and shops, the Arts Centre, Royal Botanic Gardens, Federation Square and St Kilda Road, Eureka Tower brings world-class living to the heart of Melbourne.

This residential complex has excellent security, including video phone and restricted floor access, 24-hour security and on-site concierge.



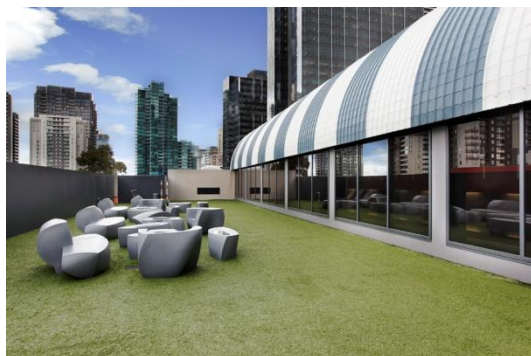
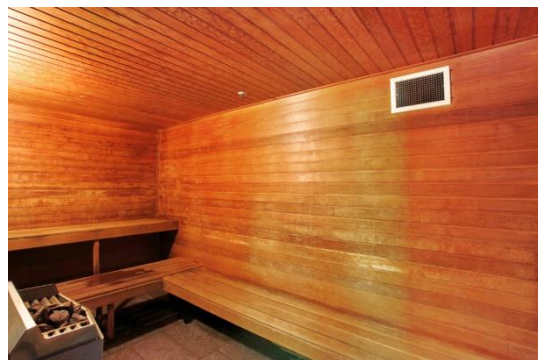
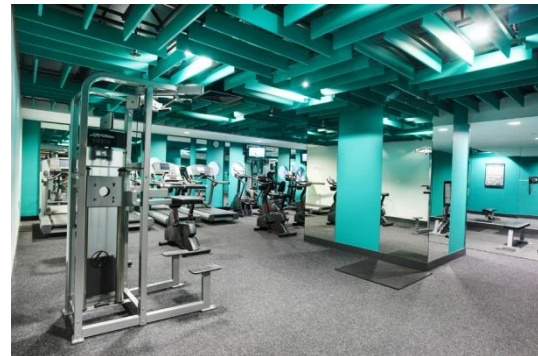
The building features a 25-metre lap pool, fully equipped gymnasium, a sauna and a private 30-seat cinema.



K113, 63 Turner Street
Port Melbourne VIC 3207
Ph: +61 3 9279 7200
Fax: +61 3 9646 0474
www.corporatekeys.com.au

Weekly rental includes all utility connections and ongoing usage charges, telephone connection and line rental including unlimited local & national telephone calls.

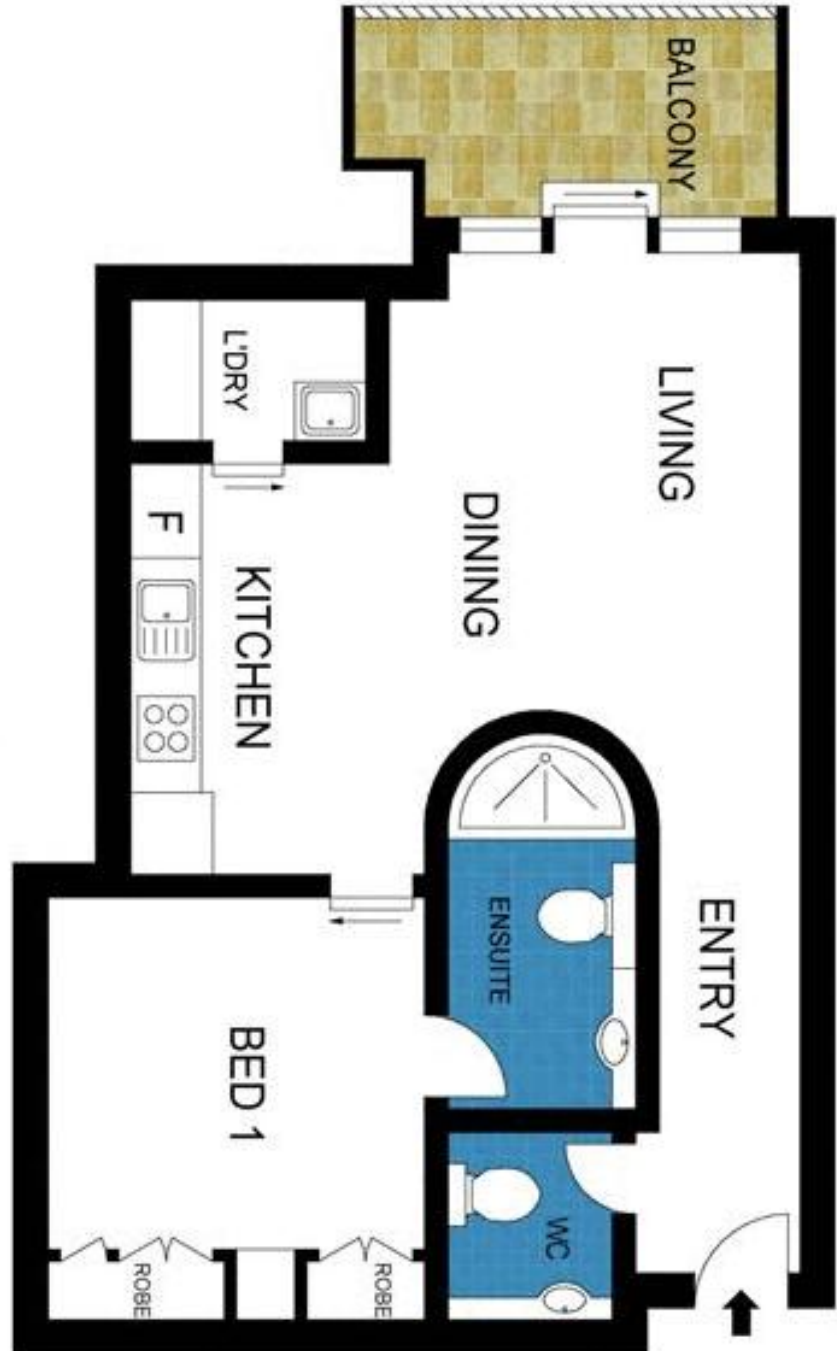
'Eureka Tower' 7 Riverside Quay, Southbank



K113, 63 Turner Street
Port Melbourne VIC 3207
Ph: +61 3 9279 7200
Fax: +61 3 9646 0474
www.corporatekeys.com.au

**‘Eureka Tower’
7 Riverside Quay, Southbank**

Property Profile



K113, 63 Turner Street
Port Melbourne VIC 3207
Ph: +61 3 9279 7200
Fax: +61 3 9646 0474
www.corporatekeys.com.au