

## 'Freshwater' 1 Freshwater Place, Southbank



Freshwater Place's riverfront position is one of the best in Melbourne. Located on the southern bank of the Yarra River between Southgate and the Crown Entertainment Complex, these apartments provide magnificent views over Melbourne.



This luxury 1 bedroom apartment has access to the exclusive Skyrise facilities on the 40<sup>th</sup> floor. The apartment is superbly furnished and includes a modern kitchen with European appliances, bathroom with European laundry, study alcove with desk and a large open-plan living area.



The building features two pools, two fully equipped gymnasiums, sauna, spa, steam room, massage room, BBQ area, ½ acre garden and fully equipped business centre. Secure car parking for one vehicle is included.

This residential complex has excellent security including video phone and restricted floor access, 24 hour security and on site concierge.

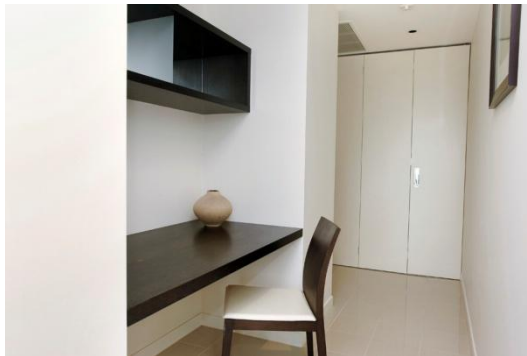


K113, 63 Turner Street  
Port Melbourne VIC 3207  
Ph: +61 3 9279 7200  
Fax: +61 3 9646 0474  
[www.corporatekeys.com.au](http://www.corporatekeys.com.au)

Weekly rental includes all utility connections and ongoing usage charges, telephone connection and line rental including unlimited local & national telephone calls.

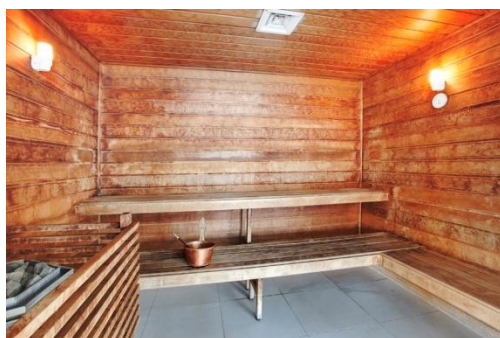
## ‘Freshwater’ 1 Freshwater Place, Southbank

# Property Profile



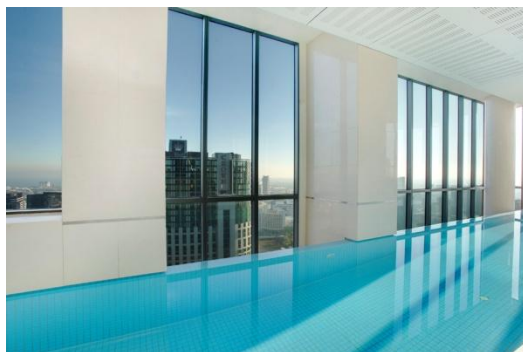
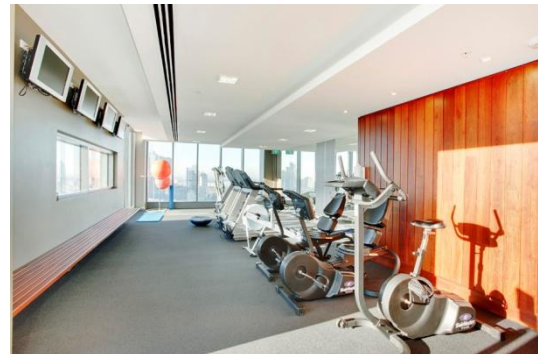
K113, 63 Turner Street  
Port Melbourne VIC 3207  
Ph: +61 3 9279 7200  
Fax: +61 3 9646 0474  
[www.corporatekeys.com.au](http://www.corporatekeys.com.au)

**‘Freshwater’**  
**1 Freshwater Place, Southbank**



K113, 63 Turner Street  
Port Melbourne VIC 3207  
Ph: +61 3 9279 7200  
Fax: +61 3 9646 0474  
[www.corporatekeys.com.au](http://www.corporatekeys.com.au)

**‘Freshwater’**  
**1 Freshwater Place, Southbank**  
**SKY LINE CLUB**



K113, 63 Turner Street  
Port Melbourne VIC 3207  
Ph: +61 3 9279 7200  
Fax: +61 3 9646 0474  
[www.corporatekeys.com.au](http://www.corporatekeys.com.au)