

'Freshwater' 1 Freshwater Place, Southbank



Freshwater Place's riverfront position is one of the best in Melbourne. Located on the southern bank of the Yarra River between Southgate and the Crown Entertainment Complex, these apartments provide magnificent views over Melbourne.



This new Corporate apartment is superbly furnished and includes a modern kitchen with European appliances, one bedroom with en-suite and an open-plan living area.



The building features a pool, fully equipped gymnasium, sauna, spa, steam room, massage room, BBQ area, ½ acre garden and fully equipped business centre. Secure car parking is available.



This residential complex has excellent security including video phone and restricted floor access, 24 hour security and on site concierge.



K113, 63 Turner Street
Port Melbourne VIC 3207
Ph: +61 3 9279 7200
Fax: +61 3 9646 0474
www.corporatekeys.com.au

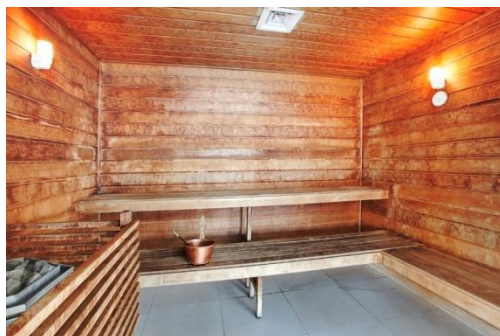
Weekly rental includes all utility connections and ongoing usage charges, telephone connection and line rental including unlimited local & national telephone calls.

'Freshwater' 1 Freshwater Place, Southbank



K113, 63 Turner Street
Port Melbourne VIC 3207
Ph: +61 3 9279 7200
Fax: +61 3 9646 0474
www.corporatekeys.com.au

**‘Freshwater’
1 Freshwater Place, Southbank**



K113, 63 Turner Street
Port Melbourne VIC 3207
Ph: +61 3 9279 7200
Fax: +61 3 9646 0474
www.corporatekeys.com.au

‘Freshwater’
1 Freshwater Place, Southbank
SKY LINE CLUB



K113, 63 Turner Street
Port Melbourne VIC 3207
Ph: +61 3 9279 7200
Fax: +61 3 9646 0474
www.corporatekeys.com.au

Property Profile

'Freshwater' 1 Freshwater Place, Southbank

Scale in metres. Indicative only. Dimensions are approximate.

