

'Chevron Green' 539 St Kilda Road



Located on the corner of St Kilda Road and Commercial Road this Chevron apartment is your Melbourne home away from home.

Within only a few minutes walk to Chapel Street, South Yarra; Fitzroy St, St Kilda; Albert Park Lake and a short tram ride to Melbourne's CBD this residential complex offers you variety at your doorstep.



This ultimate city edge apartment has tasteful new furnishings, two bedrooms plus separate study, two bathrooms, superb galley style kitchen, open plan living/dining area, floorboards throughout, European laundry and a balcony complete with a 7 piece dining suite & adjustable shutters to ensure your privacy.



This outstanding development offers gardens with entertainment and barbeque areas, heated pool, fully equipped gym and excellent residential security.



K113, 63 Turner Street
Port Melbourne VIC 3207
Ph: +61 3 9279 7200
Fax: +61 3 9646 0474
www.corporatekeys.com.au

Weekly rental includes all utility connections and ongoing usage charges, telephone connection and line rental including unlimited local & national telephone calls.

**‘Chevron Green’
539 St Kilda Road**

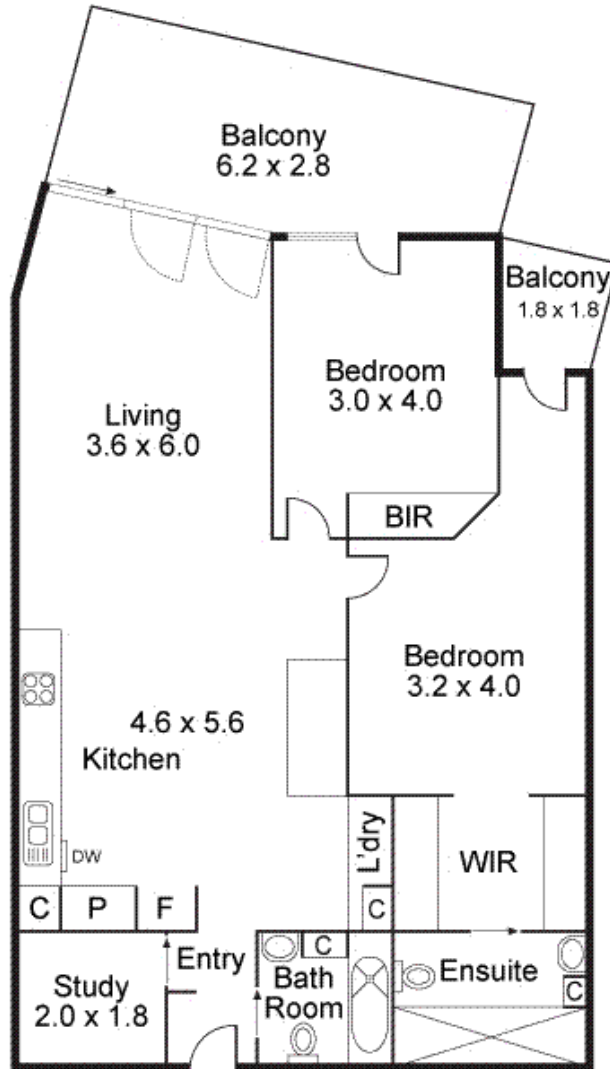
Property Profile



K113, 63 Turner Street
Port Melbourne VIC 3207
Ph: +61 3 9279 7200
Fax: +61 3 9646 0474
www.corporatekeys.com.au

Property Profile

'Chevron Green' 539 St Kilda Road



Internal	88.8 sqm	(9.6 sq) Approx
Balconies	19.8 sqm	(2.1 sq) Approx
Total	108.6 sqm	(11.7 sq) Approx

K113, 63 Turner Street
Port Melbourne VIC 3207
Ph: +61 3 9279 7200
Fax: +61 3 9646 0474
www.corporatekeys.com.au