

Mosaic @ Docklands



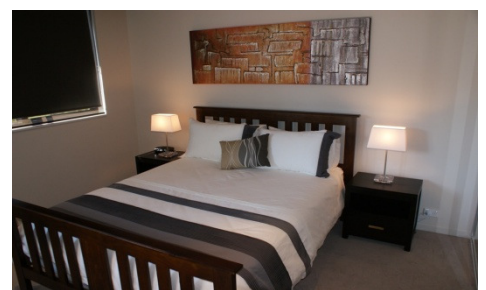
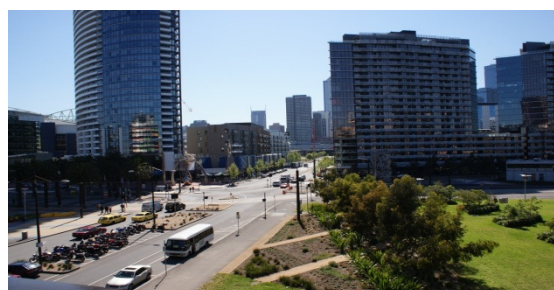
Docklands offers stunning water front living on the city fringe. A short tram ride or a pleasant stroll will take you into the heart of Melbourne's central business district. Enjoy the open parklands, or become part of the relaxed café and restaurant lifestyle that surrounds the Docklands community.

This spacious apartment has spectacular views from the balcony and the open plan living area. The apartment comprises of one large bedroom plus a full size study, bathrooms (with bath), fully equipped kitchen and full laundry facilities.



The residential complex has restricted floor access and 24 hour on-call Building Manager.

Weekly rental includes all utility connections and ongoing usage charges, telephone connection, line rental and local telephone calls.



K113, 63 Turner Street
Port Melbourne VIC 3207
Ph: +61 3 9279 7200
Fax: +61 3 9646 0474
www.corporatekeys.com.au