

'Bank' 285 City Road, Southbank

Property Profile



'Bank' is Southbank's newest addition in high rise luxury living, situated on City Road and within easy walking distance to Melbourne's CBD, Yarra River, Southbank restaurants and shops, Crown Casino and Docklands.



When space, location and quality are important then this two bedroom penthouse apartment located at 285 City Road provides all of those needs. Located on the 40th floor with magnificent views of Port Phillip Bay, this apartment offers large open plan living leading out to an entertainers balcony with a six seat outdoor dining setting. This luxury penthouse also offers two large bedrooms, master bedroom with en-suite and walk in robe. A well equipped kitchen is also available to the discerning chef. Building facilities include indoor pool and well equipped gym.



This residential complex has advanced security including video intercom, digital video security system and restricted floor access card.

[Click here](#) for a virtual tour of The Bank's building facilities.



K113, 63 Turner Street
Port Melbourne VIC 3207
Ph: +61 3 9279 7200
Fax: +61 3 9646 0474
www.corporatekeys.com.au

Weekly rental includes all utility connections and ongoing usage charges, telephone connection and line rental including unlimited local & national telephone calls.

**Please note furniture and layout may differ slightly in the apartment

'Bank'
285 City Road, Southbank

Property Profile



K113, 63 Turner Street
Port Melbourne VIC 3207
Ph: +61 3 9279 7200
Fax: +61 3 9646 0474
www.corporatekeys.com.au



CORPORATEKEYS
AUSTRALIA

'Bank' 285 City Road, Southbank

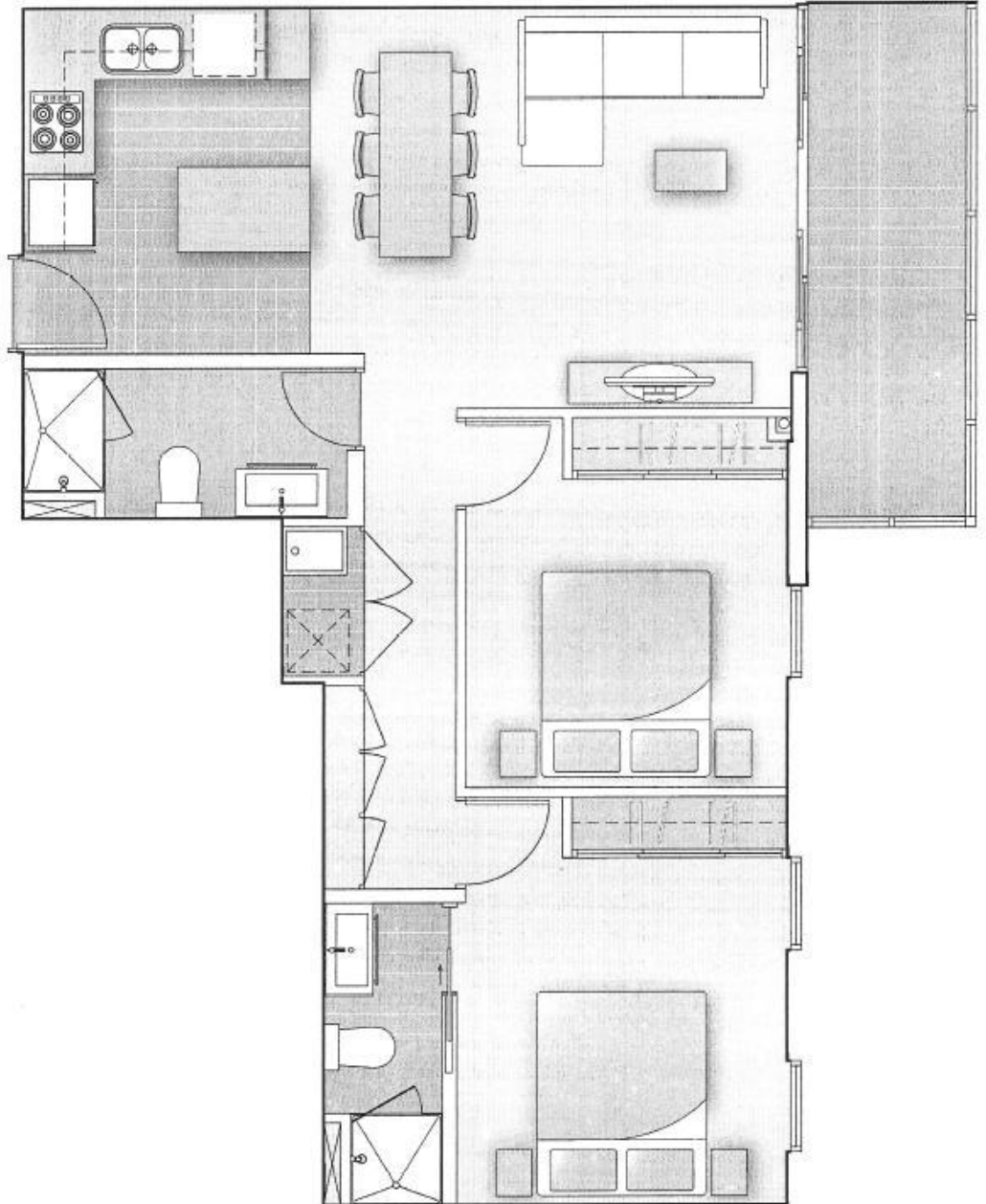
Property Profile



K113, 63 Turner Street
Port Melbourne VIC 3207
Ph: +61 3 9279 7200
Fax: +61 3 9646 0474
www.corporatekeys.com.au

'Bank'
285 City Road, Southbank

Property Profile



K113, 63 Turner Street
Port Melbourne VIC 3207
Ph: +61 3 9279 7200
Fax: +61 3 9646 0474
www.corporatekeys.com.au