

'Eureka Tower' Riverside Quay, Southbank



Located just moments away from Southbank Promenade restaurants, cafes and shops, the Arts Centre, Royal Botanic Gardens, Federation Square and St Kilda Road, Eureka Tower brings world-class living to the heart of Melbourne.



This apartment is tastefully furnished and includes a luxury kitchen with European appliances, two bedrooms, master with en-suite, second bathroom and additional powder room, separate laundry and spacious light filled open-plan living area with sensational views.



This residential complex has excellent security including video phone and restricted floor access, 24 hour security and on site concierge. The building features a 25 metre lap pool, fully equipped gymnasium, a sauna and a private 30 seat cinema.



K113, 63 Turner Street
Port Melbourne VIC 3207
Ph: +61 3 9279 7200
Fax: +61 3 9646 0474
www.corporatekeys.com.au

Ref: 4005
Property Rating: First Class

Weekly rental includes all utility connections and ongoing usage charges, telephone connection and line rental including unlimited local & national telephone calls.

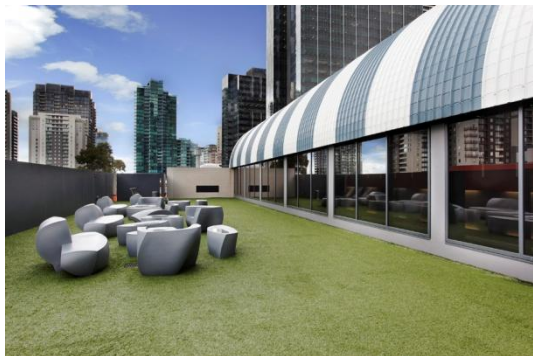
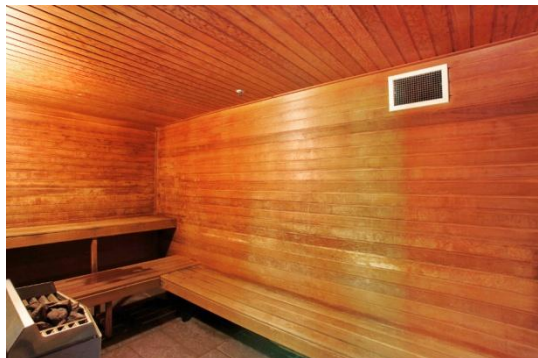
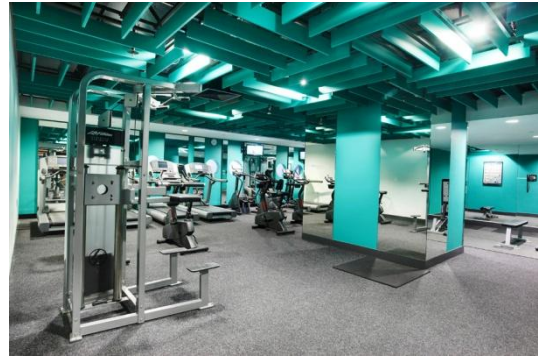
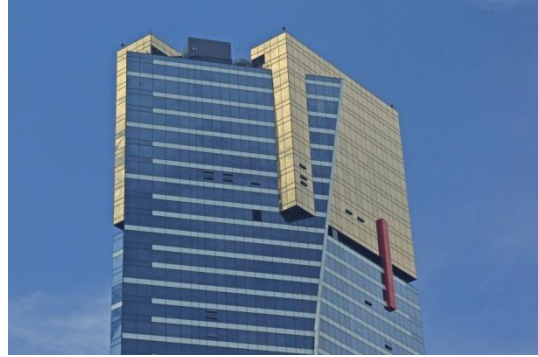
‘Eureka Tower’ Riverside Quay, Southbank

Property Profile



K113, 63 Turner Street
Port Melbourne VIC 3207
Ph: +61 3 9279 7200
Fax: +61 3 9646 0474
www.corporatekeys.com.au

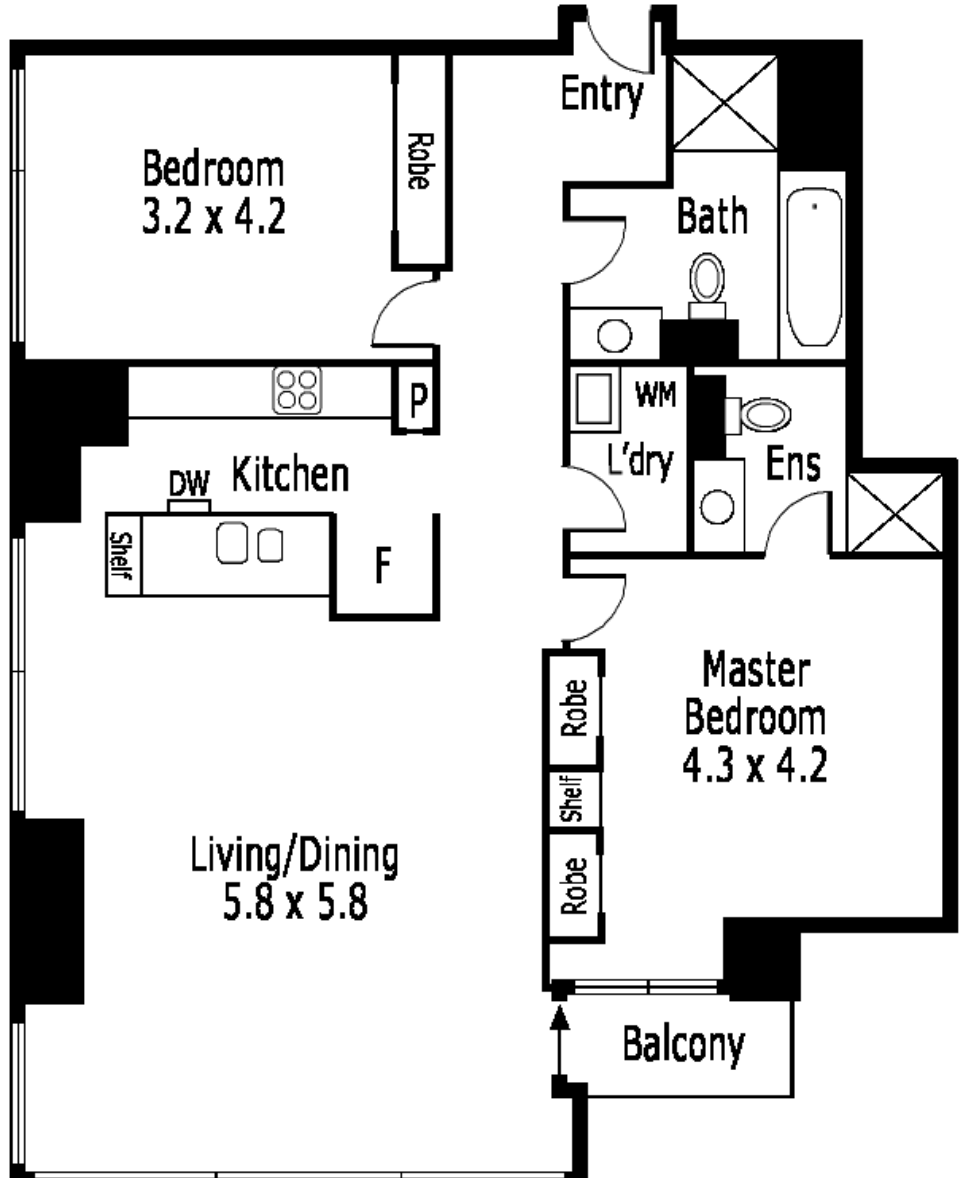
'Eureka Tower' 7 Riverside Quay, Southbank



K113, 63 Turner Street
Port Melbourne VIC 3207
Ph: +61 3 9279 7200
Fax: +61 3 9646 0474
www.corporatekeys.com.au

'Eureka Tower'
Riverside Quay, Southbank

Property Profile



K113, 63 Turner Street
Port Melbourne VIC 3207
Ph: +61 3 9279 7200
Fax: +61 3 9646 0474
www.corporatekeys.com.au