

## 'Bank' 285 City Road, Southbank



'Bank' is Southbank's newest addition in high rise luxury living, situated on City Road and within easy walking distance to Melbourne's CBD, Yarra River, Southbank restaurants and shops, Crown Casino and Docklands.



When space, location and quality are important then this two bedroom penthouse apartment located at 285 City Road provides all of those needs. Located on the 40<sup>th</sup> floor with magnificent views of Port Phillip Bay, this apartment offers large open plan living leading out to an entertainers balcony with a six seat outdoor dining setting. This luxury penthouse also offers two large bedrooms, master bedroom with en-suite and walk in robe. A well equipped kitchen is also available to the discerning chef. Building facilities include indoor pool and well equipped gym.



This residential complex has advanced security including video intercom, digital video security system and restricted floor access card.

[Click here](#) for a virtual tour of The Bank's building facilities.



K113, 63 Turner Street  
Port Melbourne VIC 3207  
Ph: +61 3 9279 7200  
Fax: +61 3 9646 0474  
[www.corporatekeys.com.au](http://www.corporatekeys.com.au)



**CORPORATEKEYS**  
AUSTRALIA

**'Bank'**

**285 City Road, Southbank**

**Property Profile**



K113, 63 Turner Street  
Port Melbourne VIC 3207  
Ph: +61 3 9279 7200  
Fax: +61 3 9646 0474  
[www.corporatekeys.com.au](http://www.corporatekeys.com.au)

Ref: 4001

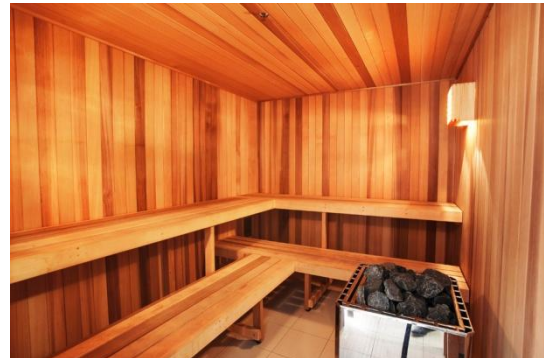
Property Rating: Business Class



**CORPORATEKEYS**  
AUSTRALIA

## 'Bank' 285 City Road, Southbank

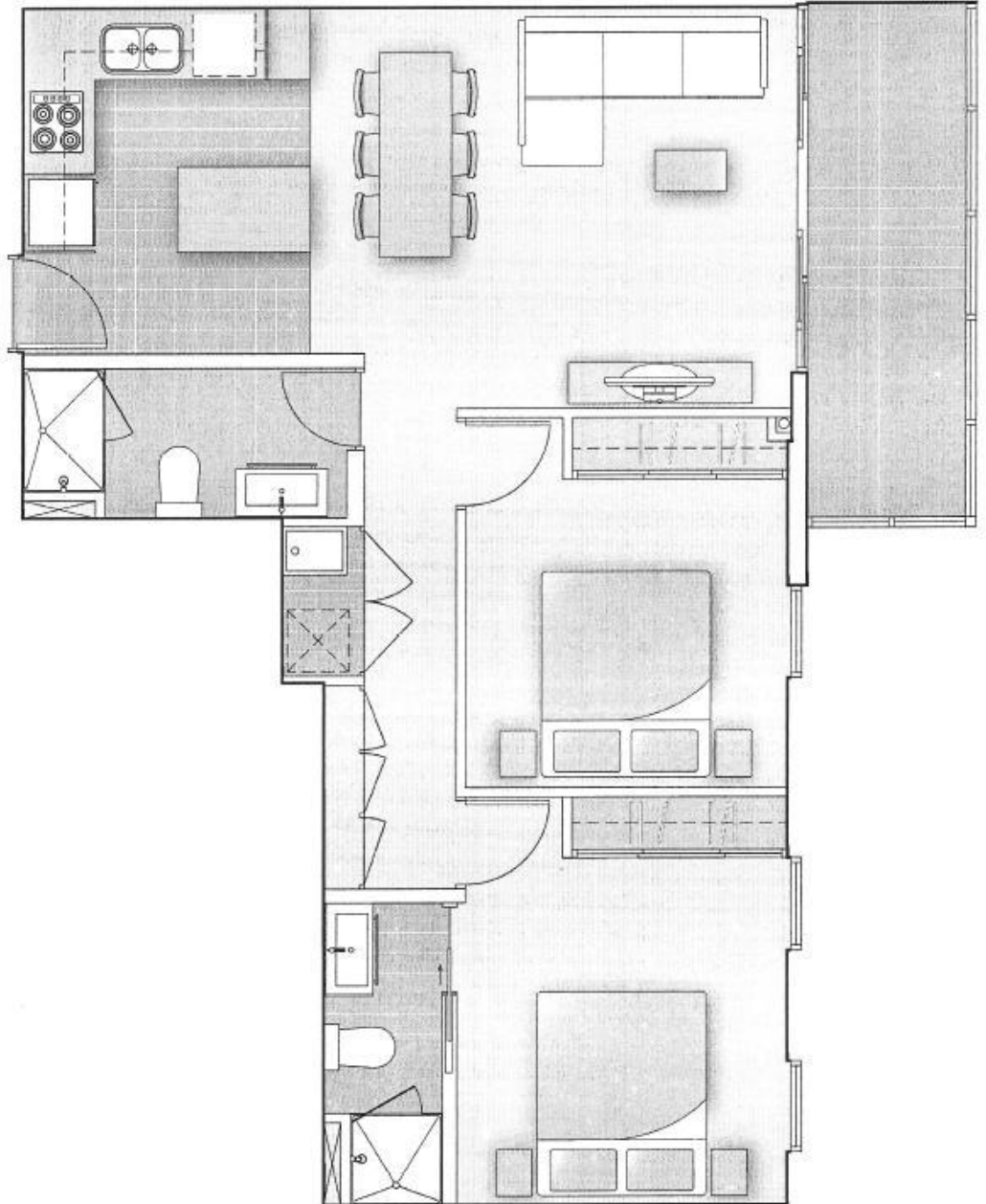
# Property Profile



K113, 63 Turner Street  
Port Melbourne VIC 3207  
Ph: +61 3 9279 7200  
Fax: +61 3 9646 0474  
[www.corporatekeys.com.au](http://www.corporatekeys.com.au)

**'Bank'**  
**285 City Road, Southbank**

**Property Profile**



K113, 63 Turner Street  
Port Melbourne VIC 3207  
Ph: +61 3 9279 7200  
Fax: +61 3 9646 0474  
[www.corporatekeys.com.au](http://www.corporatekeys.com.au)