

## ‘Freshwater’ 1 Freshwater Place, Southbank



This luxury apartment is superbly furnished and includes a modern kitchen with European appliances, two bedrooms, main bedroom with ensuite main bathroom has an European laundry, a large separate dining area and an open-plan living area which leads out to your private balcony allowing you to enjoy views over the Yarra River to the heart of the city.

The building features a pool, fully equipped gymnasium, sauna, spa, steam room, massage room, BBQ area, ½ acre garden and fully equipped business centre.

This residential complex has excellent security including video phone and restricted floor access, 24 hour security and on site concierge.

Freshwater Place’s riverfront position is one of the best in Melbourne. Located on the southern bank of the Yarra River between Southgate and the Crown Entertainment Complex, these apartments provide magnificent views over the river, city and Melbourne’s parks and gardens.



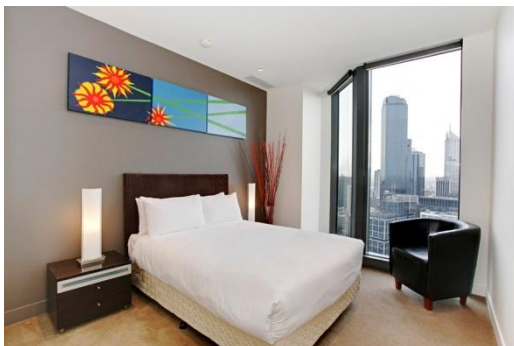
K113, 63 Turner Street  
Port Melbourne VIC 3207  
Ph: 1300 CORPORATE  
Fax: +61 3 9646 0474  
[www.corporatekeys.com.au](http://www.corporatekeys.com.au)

Ref: 3605  
Property Rating: First Class

Weekly rental includes all utility connections and ongoing usage charges, telephone connection and line rental including unlimited local & national telephone calls.

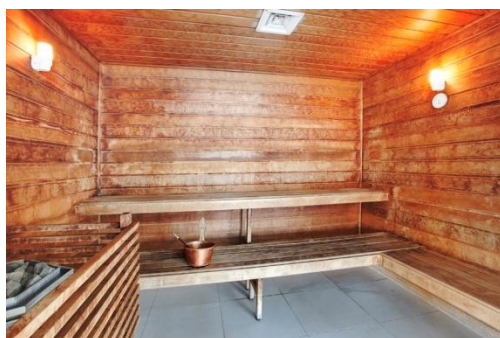
## 'Freshwater' 1 Freshwater Place, Southbank

# Property Profile



K113, 63 Turner Street  
Port Melbourne VIC 3207  
Ph: 1300 CORPORATE  
Fax: +61 3 9646 0474  
[www.corporatekeys.com.au](http://www.corporatekeys.com.au)

**‘Freshwater’**  
**1 Freshwater Place, Southbank**



K113, 63 Turner Street  
Port Melbourne VIC 3207  
Ph: +61 3 9279 7200  
Fax: +61 3 9646 0474  
[www.corporatekeys.com.au](http://www.corporatekeys.com.au)

**‘Freshwater’**  
**1 Freshwater Place, Southbank**

**3605/1 Freshwater Place Southbank**



**Building Area : 107 m<sup>2</sup> approx.**

Note: Whilst every attempt is made to ensure accuracy, all measurements, positioning, fixtures, fittings and any other data shown are an approximate interpretation. Particulars given are for general information only and do not constitute any representation on the part of the vendor or agent.