

## 'Eureka Tower' 3603/7 Riverside Quay, Southbank



Located just moments away from Southbank Promenade restaurants, cafes and shops, the Arts Centre, Royal Botanic Gardens, Federation Square and St Kilda Road, Eureka Tower brings world-class living to the heart of Melbourne.



These brand new apartments are tastefully furnished and include a luxury kitchen with European appliances, one bedroom with built in robes and access to the balcony. This superb apartment also has one bathroom, Euro laundry and open plan living and kitchen with walk in pantry.



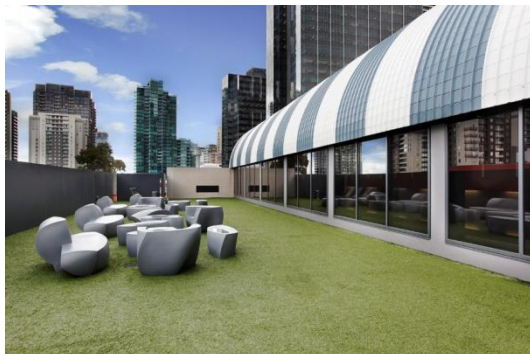
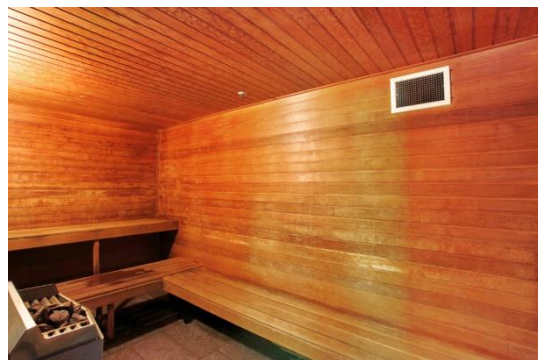
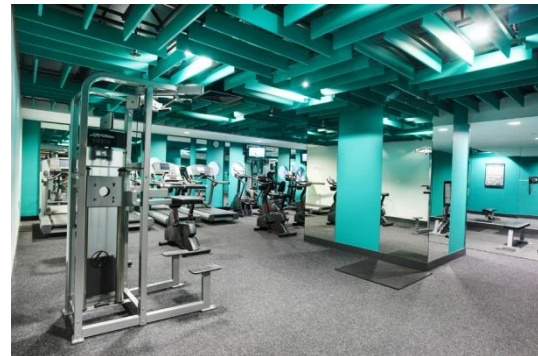
This residential complex has excellent security, including video phone and restricted floor access, 24-hour security and on-site concierge.



The building features a 25-metre lap pool, fully equipped gymnasium, a sauna and a private 30-seat cinema.

Weekly rental includes all utility connections and ongoing usage charges, telephone connection and line rental including unlimited local & national telephone calls.

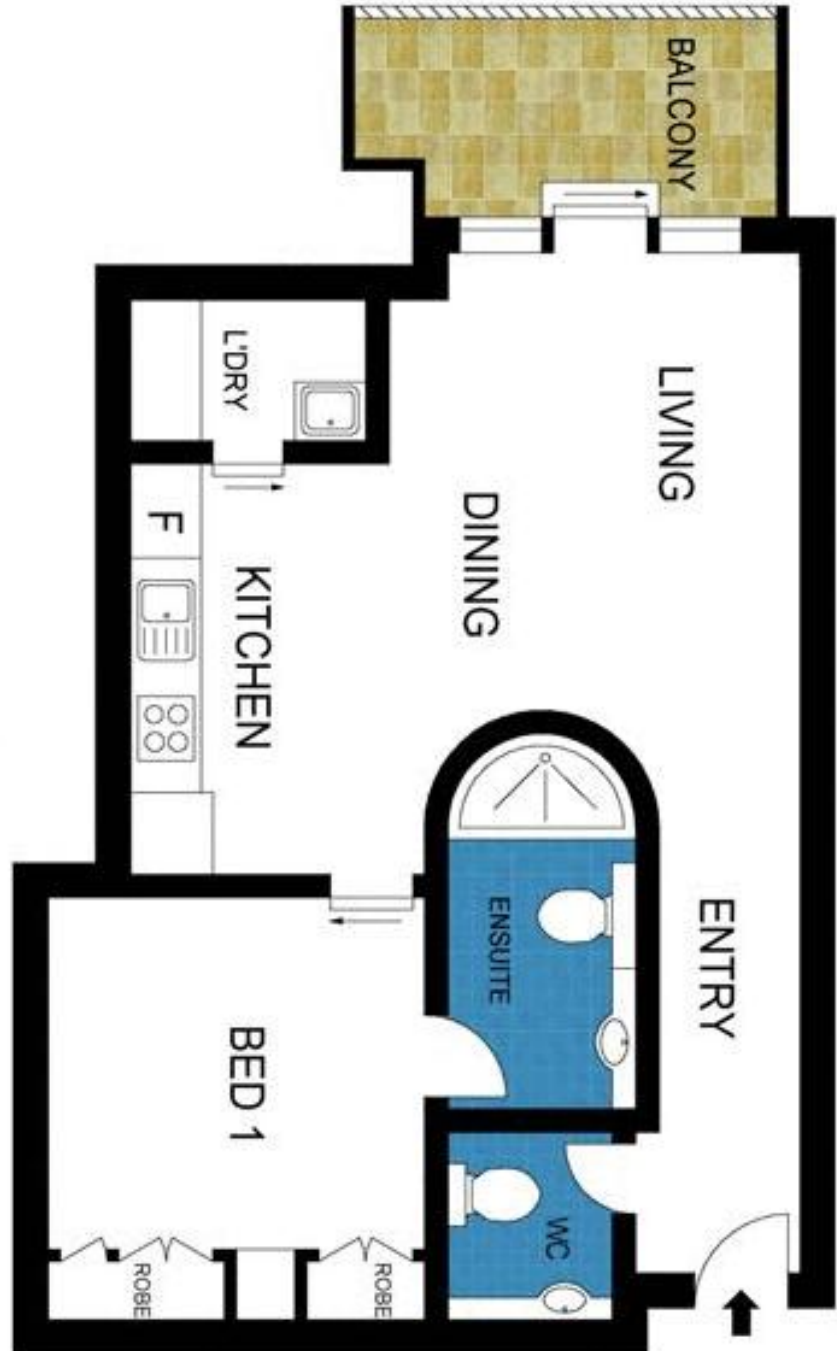
## 'Eureka Tower' 7 Riverside Quay, Southbank



K113, 63 Turner Street  
Port Melbourne VIC 3207  
Ph: +61 3 9279 7200  
Fax: +61 3 9646 0474  
[www.corporatekeys.com.au](http://www.corporatekeys.com.au)

**‘Eureka Tower’**  
**7 Riverside Quay, Southbank**

**Property Profile**



K113, 63 Turner Street  
Port Melbourne VIC 3207  
Ph: +61 3 9279 7200  
Fax: +61 3 9646 0474  
[www.corporatekeys.com.au](http://www.corporatekeys.com.au)