

## 'Freshwater' 1 Freshwater Place, Southbank



Freshwater Place's riverfront position is one of the best in Melbourne. Located on the southern bank of the Yarra River between Southgate and the Crown Entertainment Complex, these apartments provide magnificent views over Melbourne.

This new luxury apartment with amazing uninterrupted views of the bay is superbly furnished and includes a modern galley kitchen with European appliances, one bedroom with en-suite and an open-plan living area.

The building features a pool, fully equipped gymnasium, sauna, spa, steam room, massage room, BBQ area, ½ acre garden and fully equipped business centre.



K113, 63 Turner Street  
Port Melbourne VIC 3207  
Ph: +61 3 9279 7200  
Fax: +61 3 9646 0474  
[www.corporatekeys.com.au](http://www.corporatekeys.com.au)

Ref: 3510  
Property Rating: Business Class

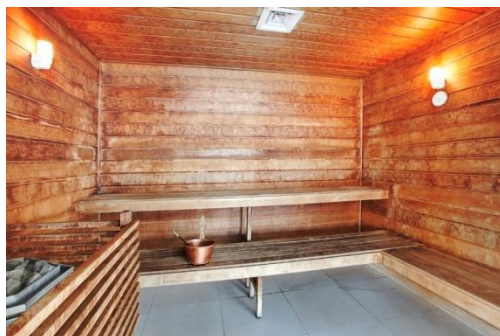
Weekly rental includes all utility connections and ongoing usage charges, telephone connection and line rental including unlimited local & national telephone calls.

**'Freshwater'**  
**1 Freshwater Place, Southbank**



K113, 63 Turner Street  
Port Melbourne VIC 3207  
Ph: +61 3 9279 7200  
Fax: +61 3 9646 0474  
[www.corporatekeys.com.au](http://www.corporatekeys.com.au)

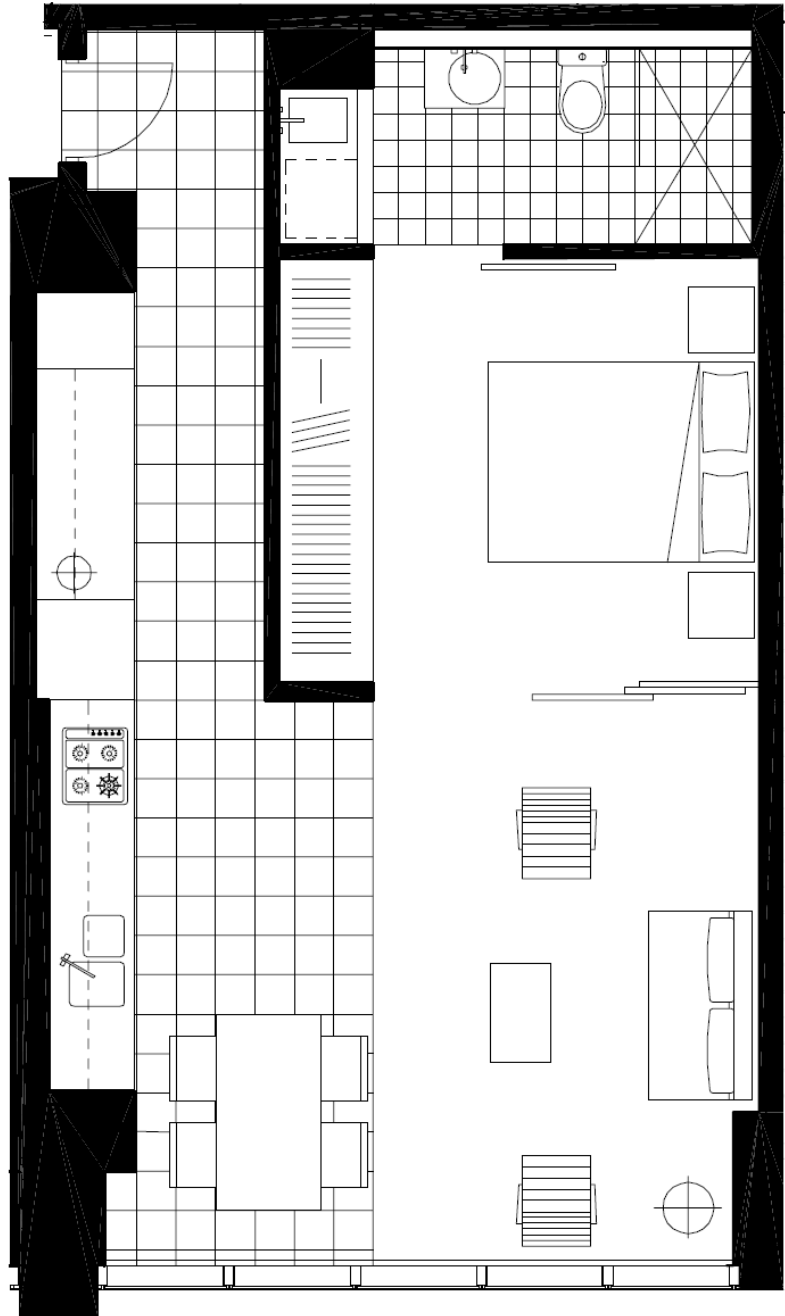
**‘Freshwater’**  
**1 Freshwater Place, Southbank**



K113, 63 Turner Street  
Port Melbourne VIC 3207  
Ph: +61 3 9279 7200  
Fax: +61 3 9646 0474  
[www.corporatekeys.com.au](http://www.corporatekeys.com.au)

**‘Freshwater’**  
**1 Freshwater Place, Southbank**

**Property Profile**



K113, 63 Turner Street  
Port Melbourne VIC 3207  
Ph: +61 3 9279 7200  
Fax: +61 3 9646 0474  
[www.corporatekeys.com.au](http://www.corporatekeys.com.au)