

'Freshwater' 1 Freshwater Place, Southbank

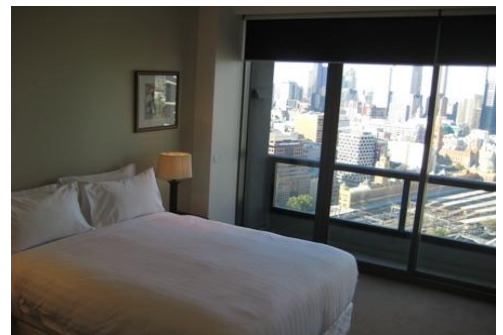
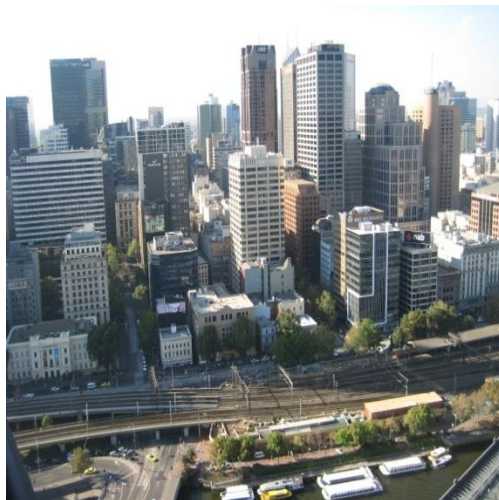


Freshwater Place's riverfront position is one of the best in Melbourne. Located on the southern bank of the Yarra River between Southgate and the Crown Entertainment Complex, these apartments provide magnificent views over the river, city and Melbourne's parks and gardens.

This new luxury two-bedroom apartment includes a full kitchen with European appliances, separate bathroom and ensuite to master bedroom, an open-plan living area opening out onto a balcony with stunning views of the city.



The building features pool, fully equipped gymnasium, sauna, spa, steam room, massage room, BBQ area, ½ acre rooftop garden and fully equipped business centre. Also featured are security entrance, restricted floor access and secure parking is available.



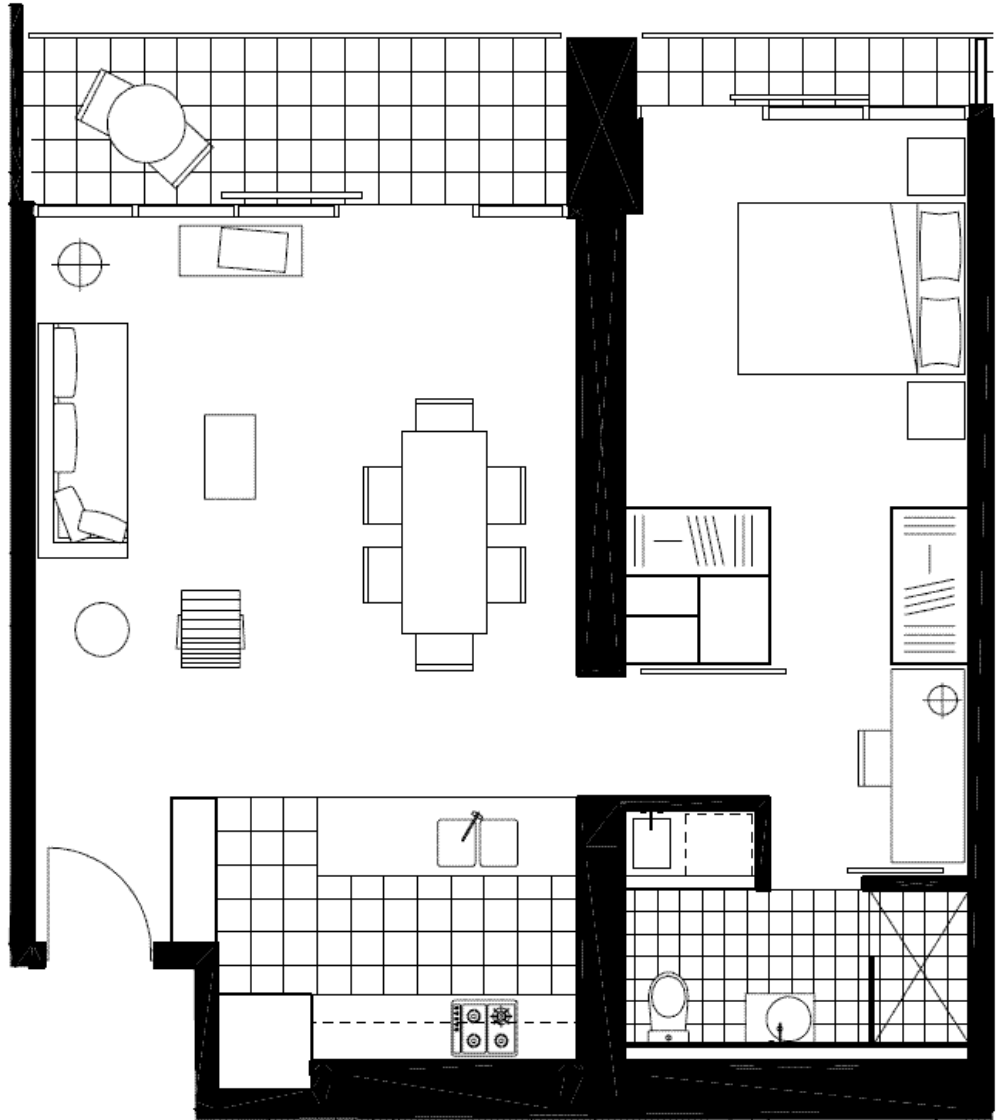
‘Freshwater’
1 Freshwater Place, Southbank



K113, 63 Turner Street
Port Melbourne VIC 3207
Ph: +61 3 9279 7200
Fax: +61 3 9646 0474
www.corporatekeys.com.au

‘Freshwater’
1 Freshwater Place, Southbank

Property Profile



Size Total:	77.0
M ² Interior:	67.9
Exterior:	9.1