

'Freshwater' 1 Freshwater Place, Southbank



Freshwater Place's riverfront position is one of the best in Melbourne. Located on the southern bank of the Yarra River between Southgate and the Crown Entertainment Complex, these apartments provide magnificent views over Melbourne.



This luxury 1 bedroom apartment is superbly furnished and includes a modern kitchen with European appliances, bathroom with European laundry, study alcove with desk and a large open-plan living area.



The building features two pools, two fully equipped gymnasiums, sauna, spa, steam room, massage room, BBQ area, ½ acre garden and fully equipped business centre.



This residential complex has excellent security including video phone and restricted floor access, 24 hour security and on site concierge.



K113, 63 Turner Street
Port Melbourne VIC 3207
Ph: +61 3 9279 7200
Fax: +61 3 9646 0474
www.corporatekeys.com.au

Ref: 3310
Property Rating: Business Class

Weekly rental includes all utility connections and ongoing usage charges, telephone connection and line rental including unlimited local & national telephone calls.

'Freshwater'

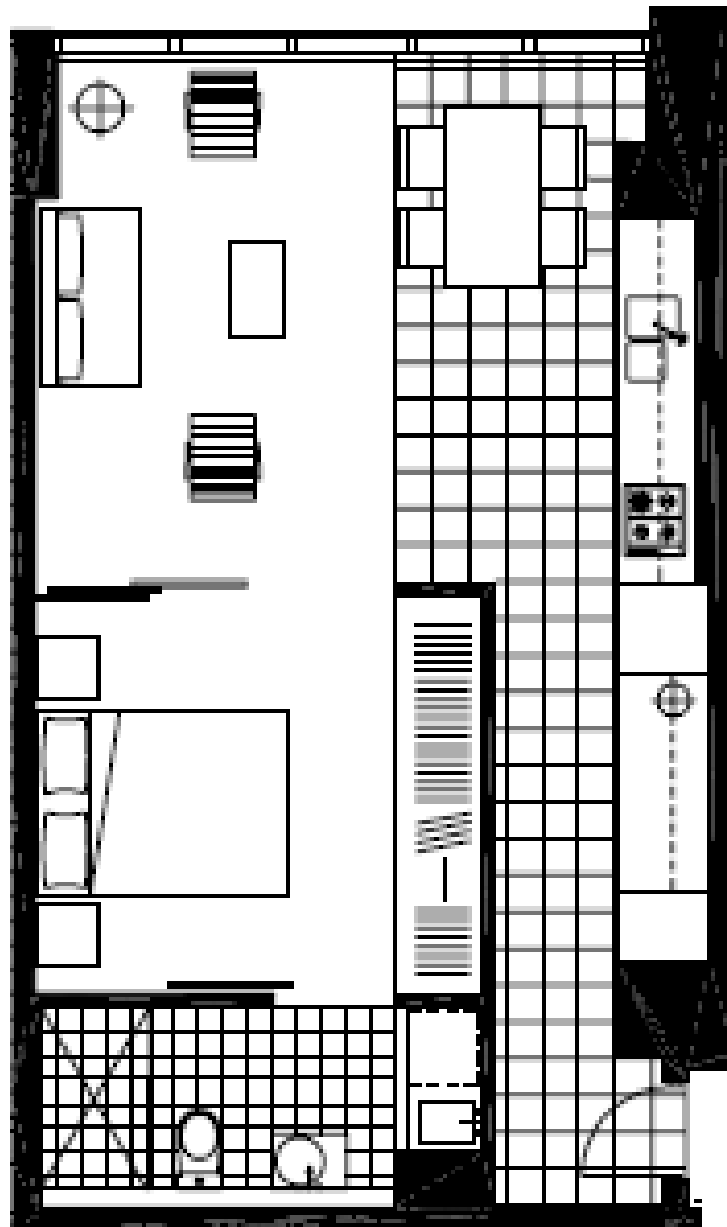
1 Freshwater Place, Southbank

Property Profile



K113, 63 Turner Street
Port Melbourne VIC 3207
Ph: +61 3 9279 7200
Fax: +61 3 9646 0474
www.corporatekeys.com.au

‘Freshwater’
1 Freshwater Place, Southbank



K113, 63 Turner Street
Port Melbourne VIC 3207
Ph: +61 3 9279 7200
Fax: +61 3 9646 0474
www.corporatekeys.com.au