

'Eureka Tower' 7 Riverside Quay, Southbank

Property Profile



Located just moments away from Southbank Promenade restaurants, cafes and shops, Eureka Tower brings world-class living to the heart of Melbourne. You are in walking distance to the Arts Centre, Royal Botanic Gardens and the heart of the CBD shopping district.



This brand new apartment is tastefully furnished and includes a luxury kitchen with European appliances. It has a large bedroom with built in robes and access to the main bathroom. This superb apartment also has separate laundry and open plan living and a balcony with views of Arts Centre right through to the bay.

This residential complex has excellent security, including video phone and restricted floor access, 24-hour security and on-site concierge. The building features a 25-metre lap pool, fully equipped gymnasium, a sauna and a private 30-seat cinema.



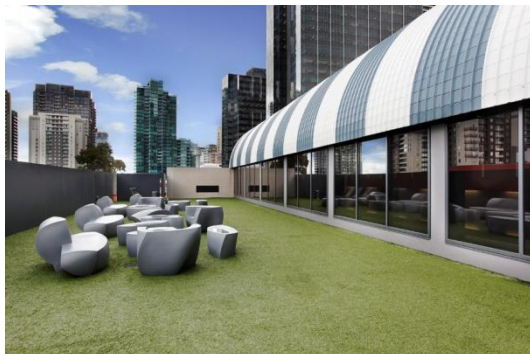
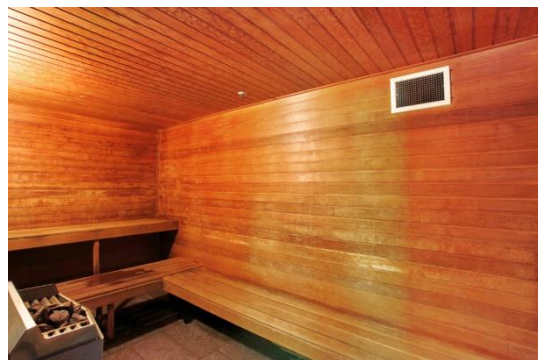
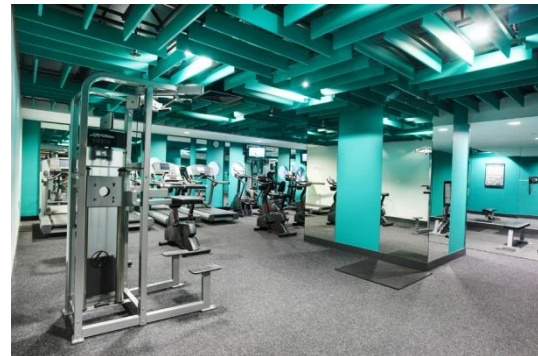
K113, 63 Turner Street
Port Melbourne VIC 3207
Ph: +61 3 9279 7200
Fax: +61 3 9646 0474
www.corporatekeys.com.au

Ref: 3303
Property Rating: Business Class

Weekly rental includes all utility connections and ongoing usage charges, telephone connection and line rental including unlimited local & national telephone calls.

Property Profile

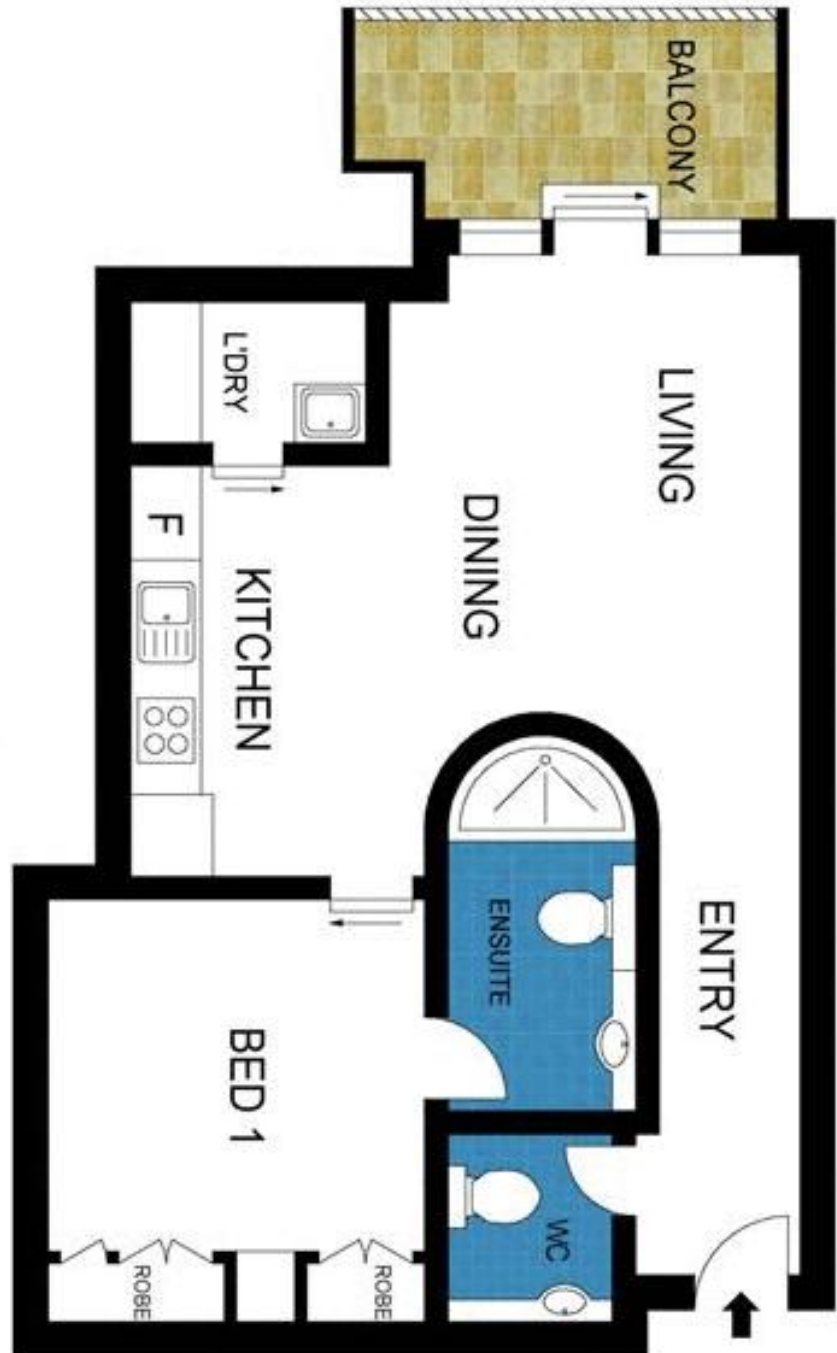
'Eureka Tower'
7 Riverside Quay, Southbank



K113, 63 Turner Street
Port Melbourne VIC 3207
Ph: +61 3 9279 7200
Fax: +61 3 9646 0474
www.corporatekeys.com.au

‘Eureka Tower’
7 Riverside Quay, Southbank

Property Profile



K113, 63 Turner Street
Port Melbourne VIC 3207
Ph: 1300 CORPORATE
Fax: +61 3 9646 0474
www.corporatekeys.com.au