

## 'Freshwater' 1 Freshwater Place, Southbank

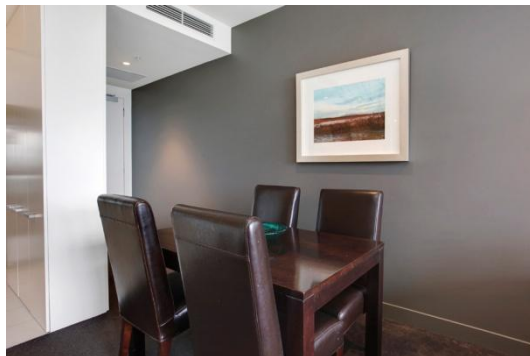


Freshwater Place's riverfront position is one of the best in Melbourne. Located on the southern bank of the Yarra River between Southgate and the Crown Entertainment Complex, these apartments provide magnificent views over the river, city and Melbourne's parks and gardens.



This apartment is superbly furnished and includes modern kitchen with European appliances, one bedroom with en-suite and balcony overlooking the Yarra River and Melbourne CBD.

The building features a pool, fully equipped gymnasium, sauna, spa, steam room, massage room, BBQ area, ½ acre garden and fully equipped business centre. Secure car parking is available.



K113, 63 Turner Street  
Port Melbourne VIC 3207  
Ph: +61 3 9279 7200  
Fax: +61 3 9646 0474  
[www.corporatekeys.com.au](http://www.corporatekeys.com.au)

**‘Freshwater’**  
**1 Freshwater Place, Southbank**



K113, 63 Turner Street  
Port Melbourne VIC 3207  
Ph: +61 3 9279 7200  
Fax: +61 3 9646 0474  
[www.corporatekeys.com.au](http://www.corporatekeys.com.au)

**‘Freshwater’**  
**1 Freshwater Place, Southbank**

