



'505'

505 St Kilda Road

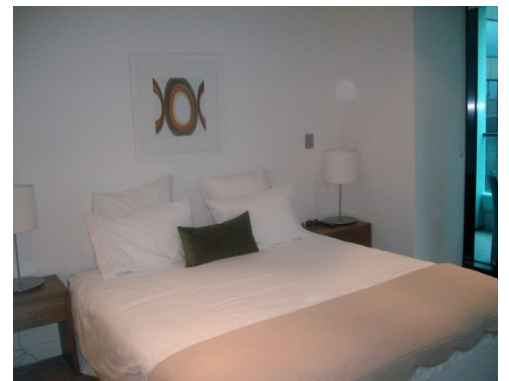


505 is a brand new building situated in the heart of St Kilda Road – Melbourne's renowned leafy boulevard.

Within only a few minutes walk to Chapel Street, South Yarra; Fitzroy St, St Kilda; Albert Park Lane and a short tram ride to Melbourne's CBD this residential complex offers you variety at your doorstep...

This stunning apartment offers 1 large bedroom, 1 bathroom, gallery style kitchen and a dining/living room that leads onto your balcony that has views over looking the building's outdoor area.

This building has a swimming pool and gymnasium and excellent residential security.



K113, 63 Turner Street
Port Melbourne VIC 3207
Ph: +61 3 9279 7200
Fax: +61 3 9646 0474
www.corporatekeys.com.au

Weekly rental includes all utility connections and ongoing usage charges, telephone connection, line rental and local telephone calls.