

'Deva' 422 St Kilda Road



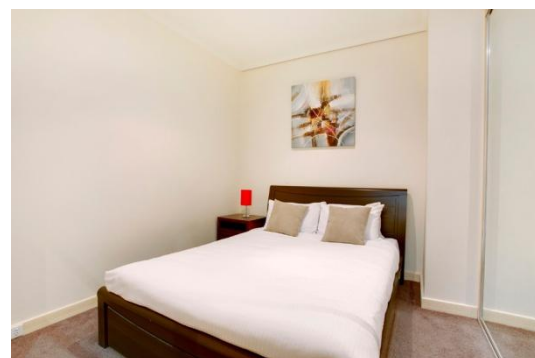
Deva is a spectacular building ideally located in the heart of St Kilda Road precinct – also known as Melbourne's leafy boulevard and gateway to the CBD.

Within only a few minutes walk to Chapel Street, South Yarra; Fitzroy St, St Kilda; Albert Park Lane and a short tram ride to Melbourne's CBD this residential complex offers you variety at your doorstep.



This impressive and spacious apartment offers 1 large bedroom, 1 bathroom, open plan living and dining, well appointed kitchen with dishwasher and laundry facilities.

This building features a rooftop gym with spectacular views from the roof top terrace.



K113, 63 Turner Street
Port Melbourne VIC 3207
Ph: +61 3 9279 7200
Fax: +61 3 9646 0474
www.corporatekeys.com.au

Weekly rental includes all utility connections and ongoing usage charges, telephone connection and line rental including unlimited local & national telephone calls.

Property Profile

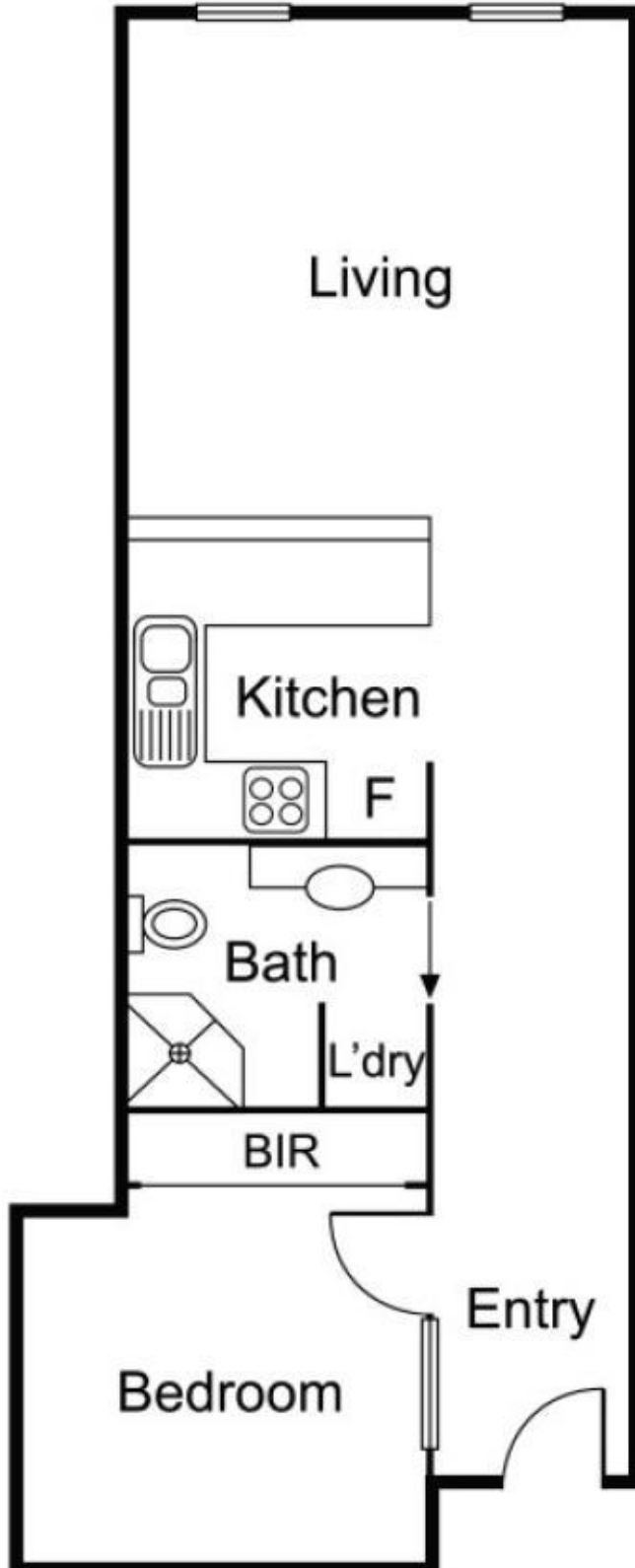
'Deva' 422 St Kilda Road



K113, 63 Turner Street
Port Melbourne VIC 3207
Ph: +61 3 9279 7200
Fax: +61 3 9646 0474
www.corporatekeys.com.au

Property Profile

'Deva'
422 St Kilda Road



K113, 63 Turner Street
Port Melbourne VIC 3207
Ph: +61 3 9279 7200
Fax: +61 3 9646 0474
www.corporatekeys.com.au