

'Eureka Towers' Riverside Quay, Southbank



Located just moments away from Southbank Promenade restaurants, cafes and shops, the Arts Centre, Royal Botanic Gardens, Federation Square and St Kilda Road, Eureka Tower brings world-class living to the heart of Melbourne.



This brand new apartment is tastefully furnished and includes a luxury kitchen with European appliances, two bedrooms, master with en-suite, second bathroom with bath, separate laundry and a spacious light filled open-plan living area with sensational views.



This residential complex has excellent security including video phone and restricted floor access, 24 hour security and on site concierge. The building features a 25 metre lap pool, fully equipped gymnasium, a sauna and a private 30 seat cinema. Secure car parking is available

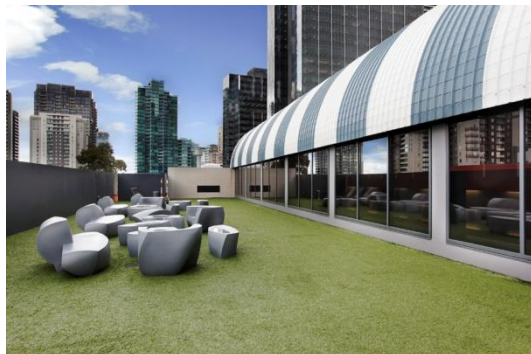
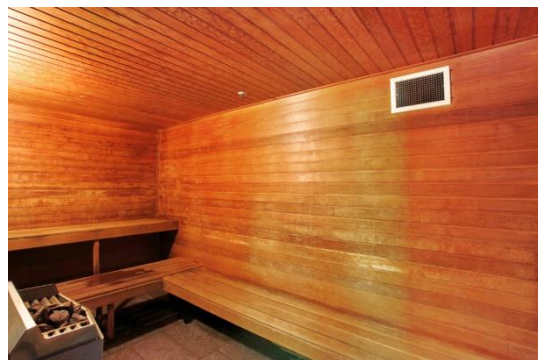
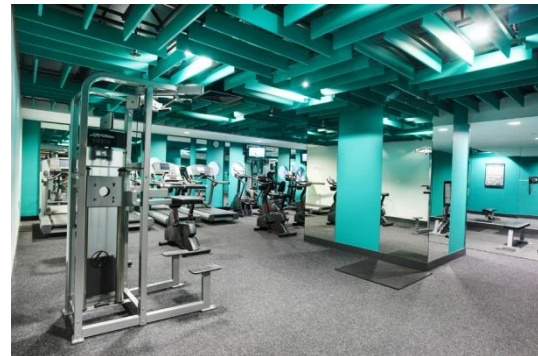


K113, 63 Turner Street
Port Melbourne VIC 3207
Ph: +61 3 9279 7200
Fax: +61 3 9646 0474
www.corporatekeys.com.au

Ref: 3005.
Property Rating: First Class

Weekly rental includes all utility connections and ongoing usage charges, telephone connection and line rental including unlimited local & national telephone calls.

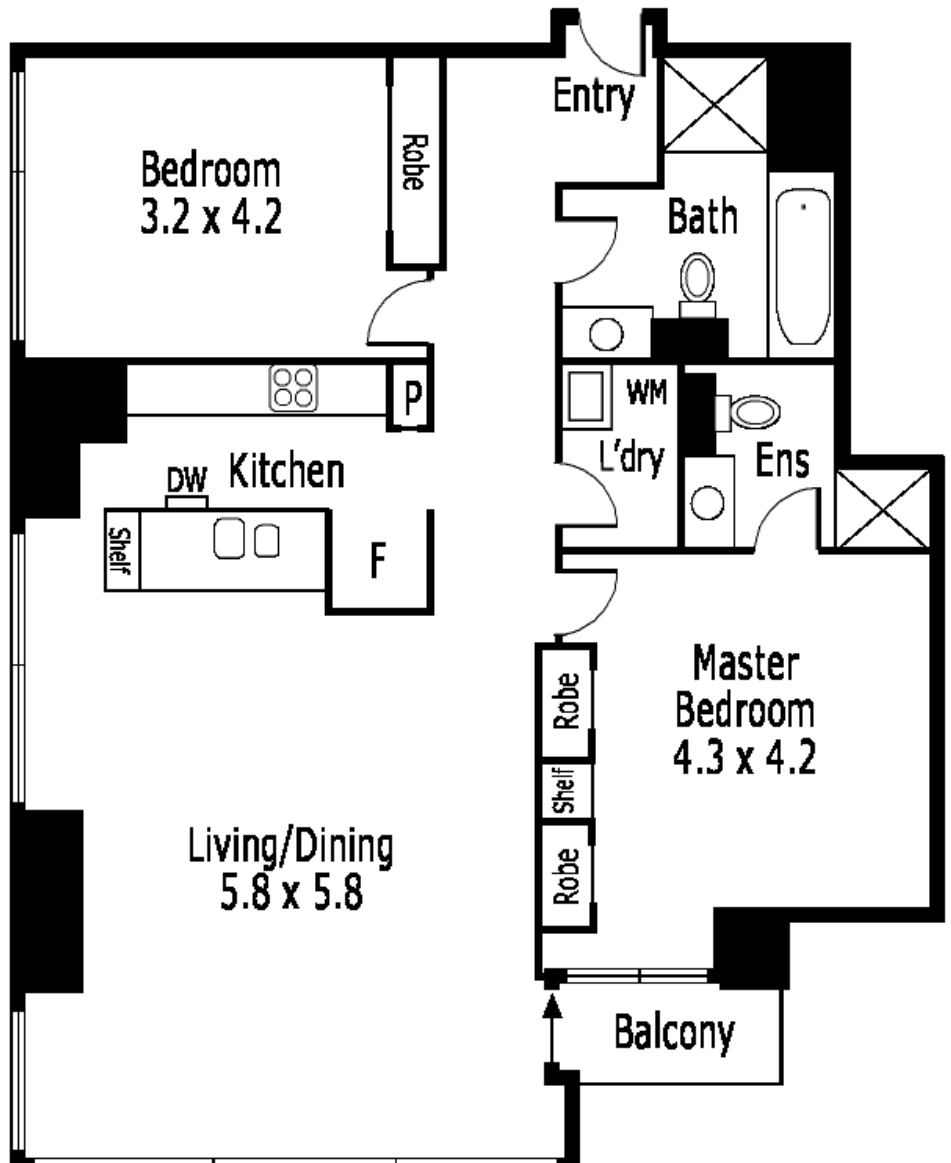
'Eureka Tower' 7 Riverside Quay, Southbank



K113, 63 Turner Street
Port Melbourne VIC 3207
Ph: +61 3 9279 7200
Fax: +61 3 9646 0474
www.corporatekeys.com.au

Property Profile

**‘Eureka Towers’
Riverside Quay, Southbank**



K113, 63 Turner Street
Port Melbourne VIC 3207
Ph: +61 3 9279 7200
Fax: +61 3 9646 0474
www.corporatekeys.com.au