

‘Sentinel Tower’ 88 Kavanagh St, Southbank

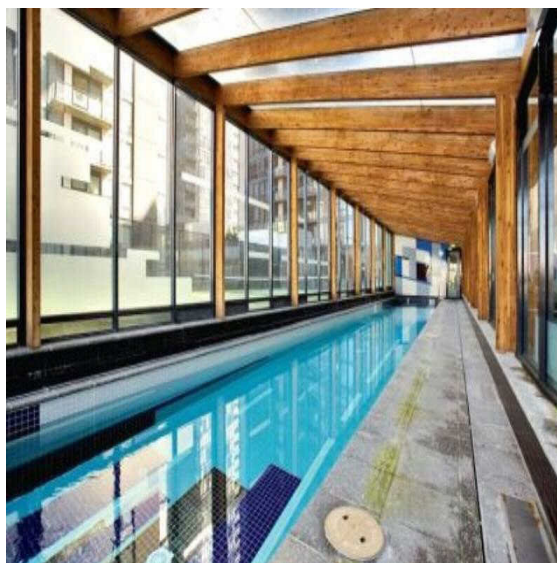
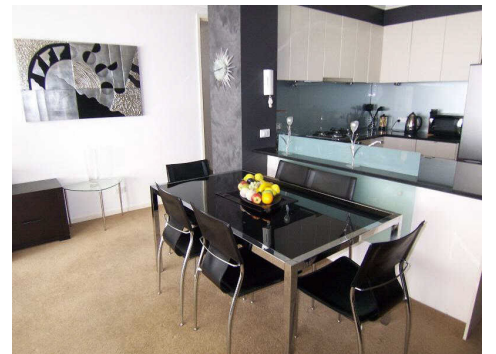


This 3 bedroom city edge apartment is tastefully furnished with a modern kitchen, open plan living dining area, 3 large bedrooms, main with ensuite, stylish bathroom, separate laundry. The apartment is air-conditioned and has a sunny balcony with great views over the Bay.

The building features restricted floor access, a lap pool, small gymnasium, and common area. Secure car parking is available.

Weekly rental includes all utility connections and ongoing usage charges, telephone connection, line rental and local telephone calls

Located in the heart of Southbank this premier residential complex is located only a few minutes walk to the Arts Centre, Southgate restaurants and shops, Melbourne CBD and St Kilda Road.



K113, 63 Turner Street
Port Melbourne VIC 3207
Ph: +61 3 9279 7200
Fax: +61 3 9646 0474
www.corporatekeys.com.au