

'Freshwater'

1 Freshwater Place, Southbank

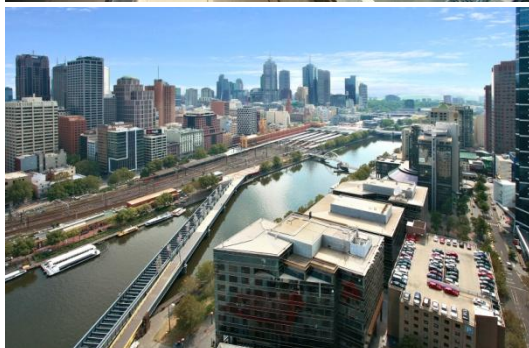
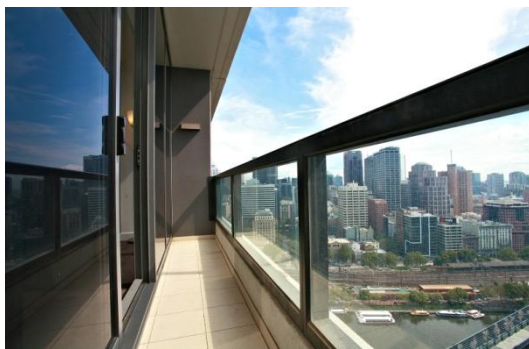


This luxury apartment is superbly furnished and includes a modern kitchen with European appliances, one bedroom, bathroom has an European laundry and an open-plan living area which leads out to your private balcony allowing you to enjoy views over the Yarra River right through to the CBD.

The building features a pool, fully equipped gymnasium, sauna, spa, steam room, massage room, BBQ area, ½ acre garden and fully equipped business centre.

This residential complex has excellent security including video phone and restricted floor access, 24 hour security and on site concierge.

Freshwater Place's riverfront position is one of the best in Melbourne. Located on the southern bank of the Yarra River between Southgate and the Crown Entertainment Complex, these apartments provide magnificent views over the river, city and Melbourne's parks and gardens.



K113, 63 Turner Street
Port Melbourne VIC 3207
Ph: 1300 CORPORATE
Fax: +61 3 9646 0474
www.corporatekeys.com.au

Ref: 2905
Property Rating: Business Class

Weekly rental includes all utility connections and ongoing usage charges, telephone connection and line rental including unlimited local & national telephone calls.

'Freshwater' 1 Freshwater Place, Southbank



K113, 63 Turner Street
Port Melbourne VIC 3207
Ph: +61 3 9279 7200
Fax: +61 3 9646 0474
www.corporatekeys.com.au