

## ‘109 Clarendon’ 109 Clarendon St, Southbank

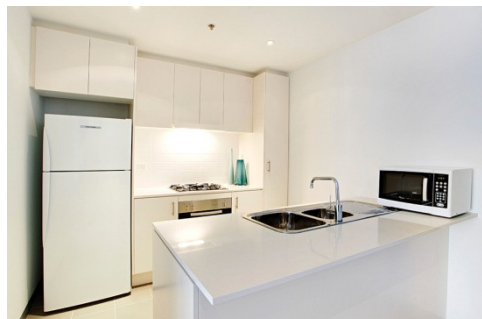


When space, location and quality are important then this two bedroom apartment located in 109 Clarendon provides all of those needs. Located on the 27<sup>th</sup> floor with magnificent views of Port Phillip Bay and the lights of the CBD this apartment offers open plan living with sliding glass doors leading out to the balcony, two large bedrooms, master bedroom with en-suite and walk in robe and a well equipped modern kitchen.

This residential complex has advanced security including video intercom, digital video security system and restricted floor access card.

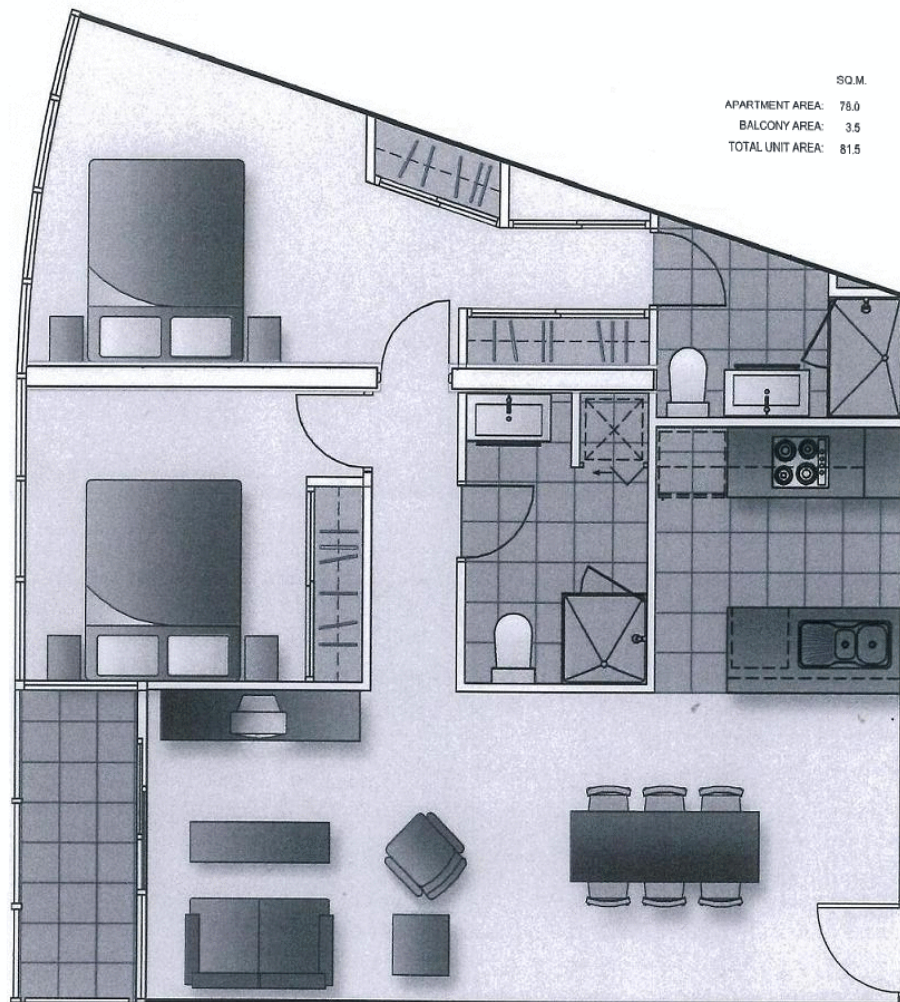
Weekly rental includes all utility connections and ongoing usage charges, telephone connection, line rental and local telephone calls.

‘109 Clarendon’ is situated on the corner of Clarendon St and City Road and is in easy walking distance to Melbourne’s CBD, Yarra River, Southbank restaurants and shops, Crown Casino and Docklands.



K113, 63 Turner Street  
Port Melbourne VIC 3207  
Ph: +61 3 9279 7200  
Fax: +61 3 9646 0474  
[www.corporatekeys.com.au](http://www.corporatekeys.com.au)

**‘109 Clarendon’**  
**109 Clarendon St, Southbank**  
**Floor Plan**



K113, 63 Turner Street  
Port Melbourne VIC 3207  
Ph: +61 3 9279 7200  
Fax: +61 3 9646 0474  
[www.corporatekeys.com.au](http://www.corporatekeys.com.au)