

'Freshwater' 1 Freshwater Place, Southbank

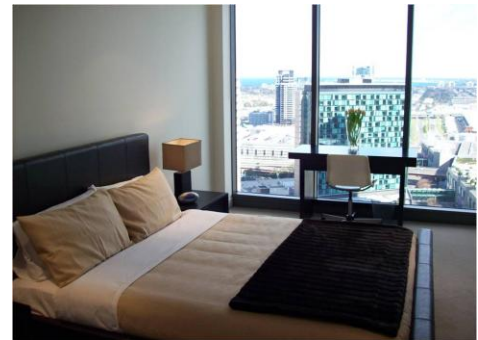


Freshwater's riverfront position is one of the best in Melbourne. Located on the southern bank of the Yarra River between Southgate and the Crown Entertainment Complex, these apartments provide magnificent views over the river, city and Melbourne's parks and gardens.



This luxury apartment is superbly furnished and includes a modern kitchen with European appliances, two bedrooms (master with en-suite) and a large spacious open-plan living area with stunning views.

The building features a pool, fully equipped gymnasium, sauna, spa, steam room, massage room, BBQ area, ½ acre garden and fully equipped business centre. Secure car parking is included.



K113, 63 Turner Street
Port Melbourne VIC 3207
Ph: +61 3 9279 7200
Fax: +61 3 9646 0474
www.corporatekeys.com.au

Ref: 2612
Property Rating: First Class:

Weekly rental includes all utility connections and ongoing usage charges, telephone connection and line rental including unlimited local & national telephone calls.

‘Freshwater’
1 Freshwater Place, Southbank



K113, 63 Turner Street
Port Melbourne VIC 3207
Ph: +61 3 9279 7200
Fax: +61 3 9646 0474
www.corporatekeys.com.au