

## 'Bank' 285 City Road, Southbank



'Bank' is situated on City Road and is in easy walking distance to Melbourne's CBD, Yarra River, Southbank restaurants and shops, Crown Casino and Docklands.



When space, location and quality are important then this two bedroom apartment located at 285 City Road provides all of those needs. Located on the 24<sup>th</sup> floor with magnificent views of Port Phillip Bay, this apartment offers large open plan living leading out to the outdoor balcony, two large bedrooms, master bedroom with en-suite and walk in robe and a well equipped kitchen. Benefits also include indoor pool and well equipped gym.



This residential complex has advanced security including video intercom, digital video security system and restricted floor access card.

[Click here](#) for a virtual tour of The Bank's building facilities.

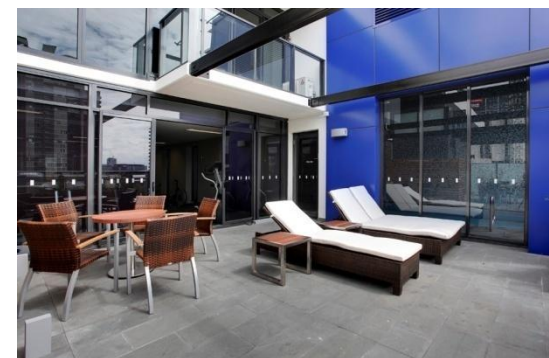
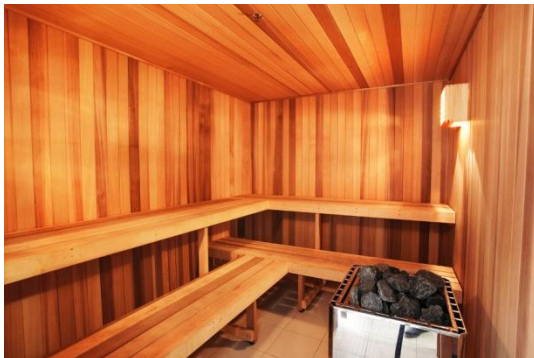


K113, 63 Turner Street  
Port Melbourne VIC 3207  
Ph: +61 3 9279 7200  
Fax: +61 3 9646 0474  
[www.corporatekeys.com.au](http://www.corporatekeys.com.au)

Weekly rental includes all utility connections and ongoing usage charges, telephone connection and line rental including unlimited local & national telephone calls.

**‘Bank’**  
**285 City Road, Southbank**

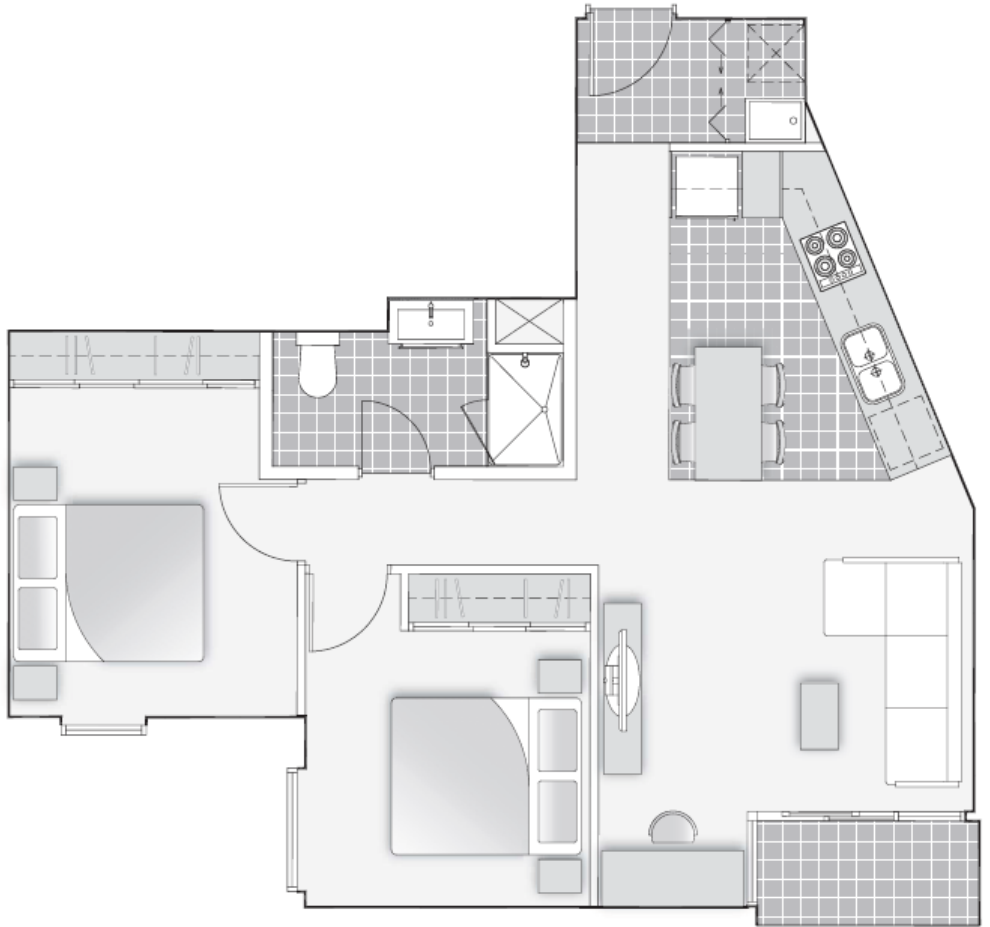
**Property Profile**



K113, 63 Turner Street  
Port Melbourne VIC 3207  
Ph: +61 3 9279 7200  
Fax: +61 3 9646 0474  
[www.corporatekeys.com.au](http://www.corporatekeys.com.au)

**'Bank'**  
**285 City Road, Southbank**

**Property Profile**



K113, 63 Turner Street  
Port Melbourne VIC 3207  
Ph: +61 3 9279 7200  
Fax: +61 3 9646 0474  
[www.corporatekeys.com.au](http://www.corporatekeys.com.au)