

'Freshwater' 1 Freshwater Place, Southbank



Freshwater Place's riverfront position is one of the best in Melbourne. Located on the southern bank of the Yarra River between Southgate and the Crown Entertainment Complex, these apartments provide magnificent views over Melbourne.

This luxury apartment is one of Freshwater's larger one bedroom properties. It is superbly furnished and includes a modern kitchen with European appliances, bathroom with European laundry, study alcove with desk, large open-plan living area and views from the balcony.



The building features a pool, fully equipped gymnasium, sauna, spa, steam room, massage room, BBQ area, ½ acre garden and fully equipped business centre. Secure car parking for one vehicle is available for lease.



This residential complex has excellent security including video phone and restricted floor access, 24 hour security and on site concierge.



K113, 63 Turner Street
Port Melbourne VIC 3207
Ph: +61 3 9279 7200
Fax: +61 3 9646 0474
www.corporatekeys.com.au

Ref: 2404
Property Rating: Business Class

Weekly rental includes all utility connections and ongoing usage charges, telephone connection and line rental including unlimited local & national telephone calls.

‘Freshwater’
1 Freshwater Place, Southbank

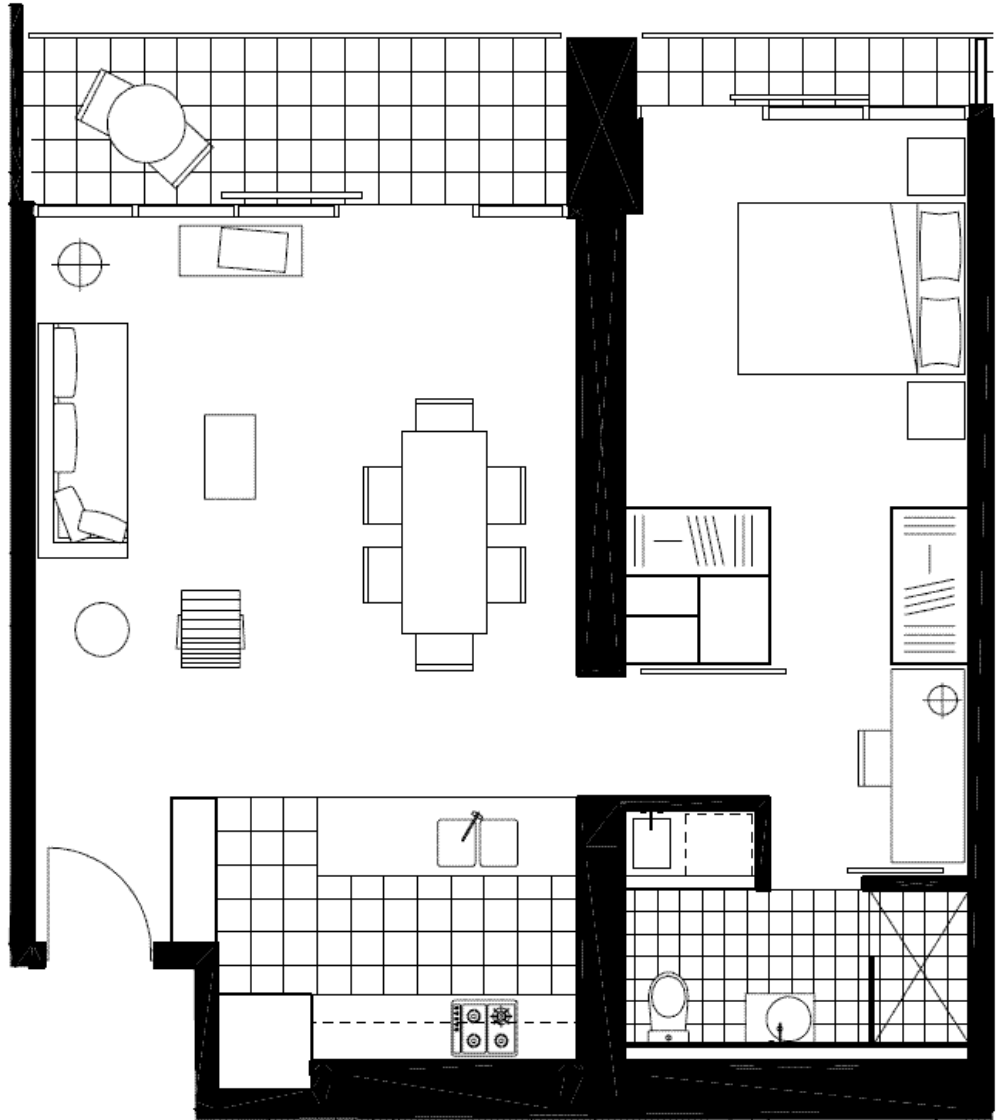
Property Profile



K113, 63 Turner Street
Port Melbourne VIC 3207
Ph: +61 3 9279 7200
Fax: +61 3 9646 0474
www.corporatekeys.com.au

'Freshwater'
1 Freshwater Place, Southbank

Property Profile



Size Total:	77.0
M ² Interior:	67.9
Exterior:	9.1