



**'505'**  
**505 St Kilda Road**



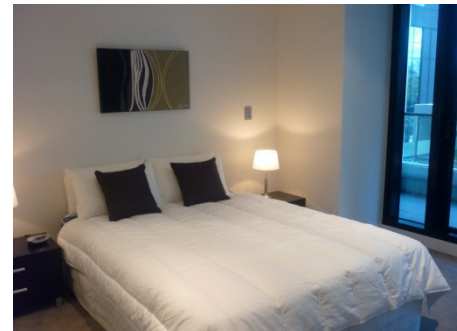
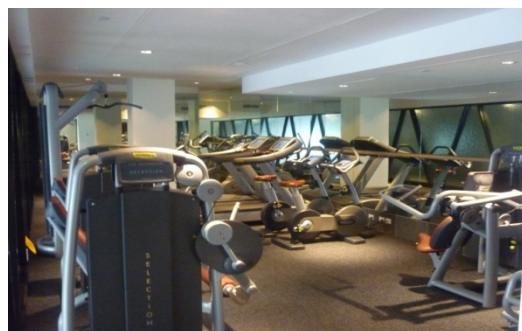
505 is a brand new building situated in the heart of St Kilda Road – Melbourne's renowned leafy boulevard.

Within only a few minutes walk to Chapel Street, South Yarra; Fitzroy St, St Kilda; Albert Park Lane and a short tram ride to Melbourne's CBD this residential complex offers you variety at your doorstep...

This stunning apartment offers 1 large bedroom, 1 bathroom, gallery style kitchen and a dining/living room that leads onto your balcony that has views over looking the building's outdoor area.



This building has a swimming pool and gymnasium and excellent residential security.



K113, 63 Turner Street  
Port Melbourne VIC 3207  
Ph: +61 3 9279 7200  
Fax: +61 3 9646 0474  
[www.corporatekeys.com.au](http://www.corporatekeys.com.au)

Weekly rental includes all utility connections and ongoing usage charges, telephone connection, line rental and local telephone calls.