

‘Regency Towers’ 265 Exhibition St, Melbourne



Regency Towers is one of Melbourne's most prestigious apartment buildings, boasting luxury finishes, breath-taking views and outstanding recreational facilities. Exhibition Street is one of Melbourne's finest locations, situated in the heart of the theatre district and a short stroll from restaurants, cafes, bars and Melbourne's shopping district.



This tastefully furnished apartment has two bedrooms with queen size beds, two bathrooms, polished wood flooring, lounge with balcony access, full laundry facilities and a modern fully equipped kitchen.

The residential complex has full security including restricted floor access. Facilities include a pool, gymnasium, spa, tennis court and bar/restaurant on the ground floor.



K113, 63 Turner Street
Port Melbourne VIC 3207
Ph: +61 3 9279 7200
Fax: +61 3 9646 0474
www.corporatekeys.com.au

Ref: 2108
Property Rating: Business Class

Weekly rental includes all utility connections and ongoing usage charges, telephone connection and line rental including unlimited local & national telephone calls.

'Regency Towers' 265 Exhibition St, Melbourne

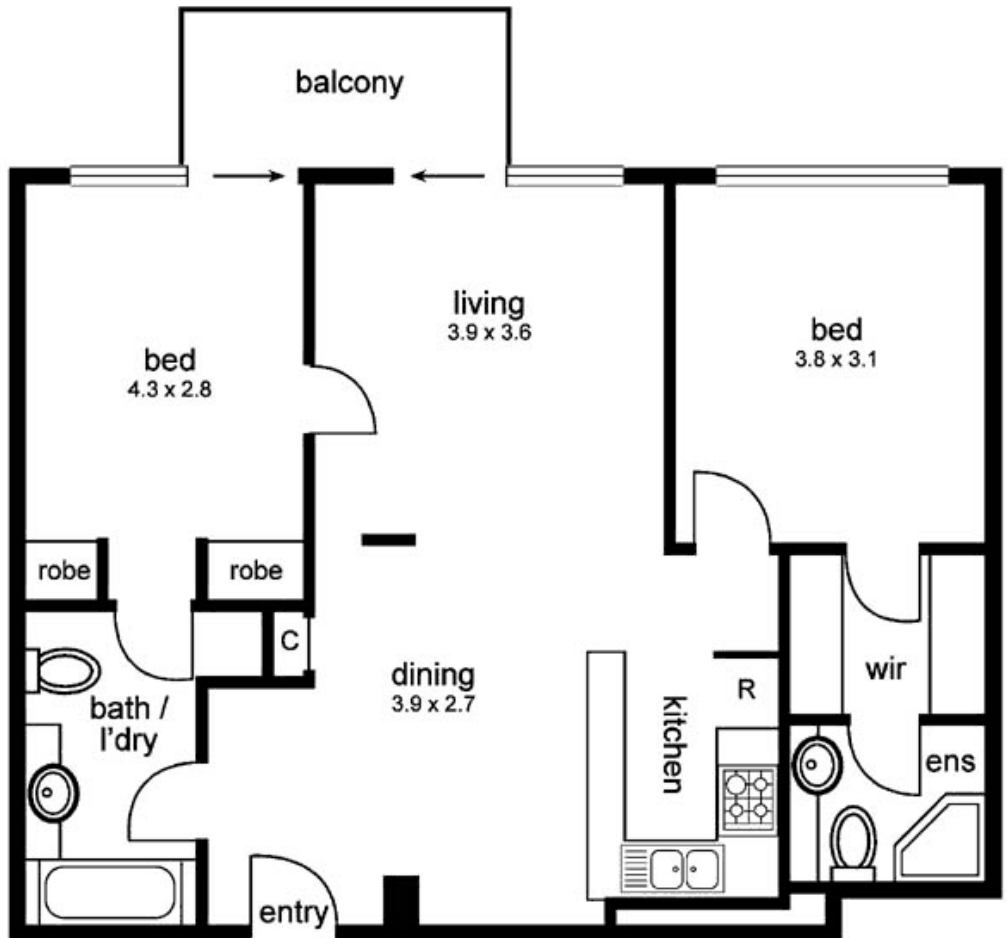
Property Profile



K113, 63 Turner Street
Port Melbourne VIC 3207
Ph: +61 3 9279 7200
Fax: +61 3 9646 0474
www.corporatekeys.com.au

**‘Regency Towers’
265 Exhibition St, Melbourne**

Property Profile



K113, 63 Turner Street
Port Melbourne VIC 3207
Ph: +61 3 9279 7200
Fax: +61 3 9646 0474
www.corporatekeys.com.au