

## 'Clarendon Towers' 80 Clarendon St, Southbank

# Property Profile

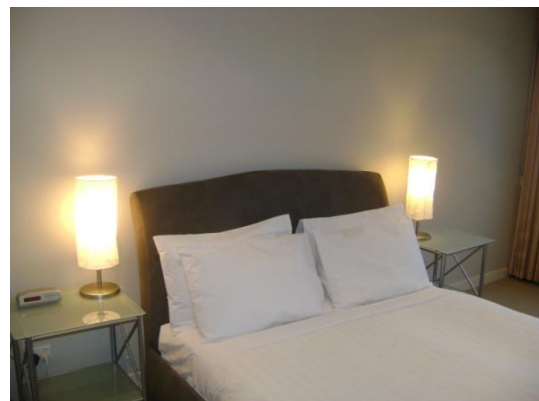


Clarendon Towers is situated on the corner of Clarendon and Haig Street in easy walking distance to Melbourne's CBD, Southbank restaurants and shops, Crown Casino and Docklands.



This spacious two bedroom apartment has a sunny open plan living area and a balcony with city views. It boasts a modern kitchen with granite bench tops, two bathrooms (one with bath) and powder room, and separate laundry.

The building features a heated swimming pool and well equipped gymnasium.



This residential complex has advanced security including video intercom, digital video security system and restricted floor access card.

K113, 63 Turner Street  
Port Melbourne VIC 3207  
Ph: +61 3 9279 7200  
Fax: +61 3 9646 0474  
[www.corporatekeys.com.au](http://www.corporatekeys.com.au)