

'109 Clarendon' 109 Clarendon St, Southbank



'109 Clarendon' is situated on the corner of Clarendon St and City Road and is in easy walking distance to Melbourne's CBD, Yarra River, Southbank restaurants and shops, Crown Casino and Docklands.



When space, location and quality are important then this brand new two bedroom apartment located in 109 Clarendon provides all of those needs. Located on the 20th floor with magnificent views of Port Phillip Bay and the lights of the CBD this apartment offers large open plan living complimented glass doors leading out to the outdoor balcony, two large bedrooms, master bedroom with en-suite and walk in robe and a well equipped modern kitchen. Benefits also include heated indoor spa and well equipped gym.



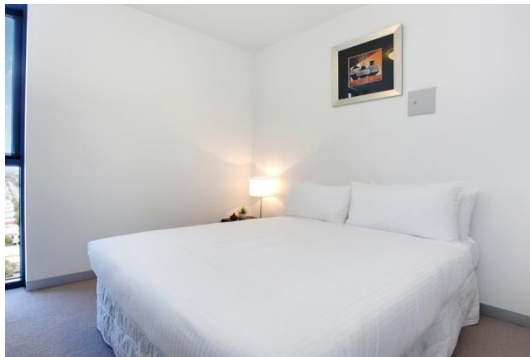
This residential complex has advanced security including video intercom, digital video security system and restricted floor access card.



K113, 63 Turner Street
Port Melbourne VIC 3207
Ph: +61 3 9279 7200
Fax: +61 3 9646 0474
www.corporatekeys.com.au

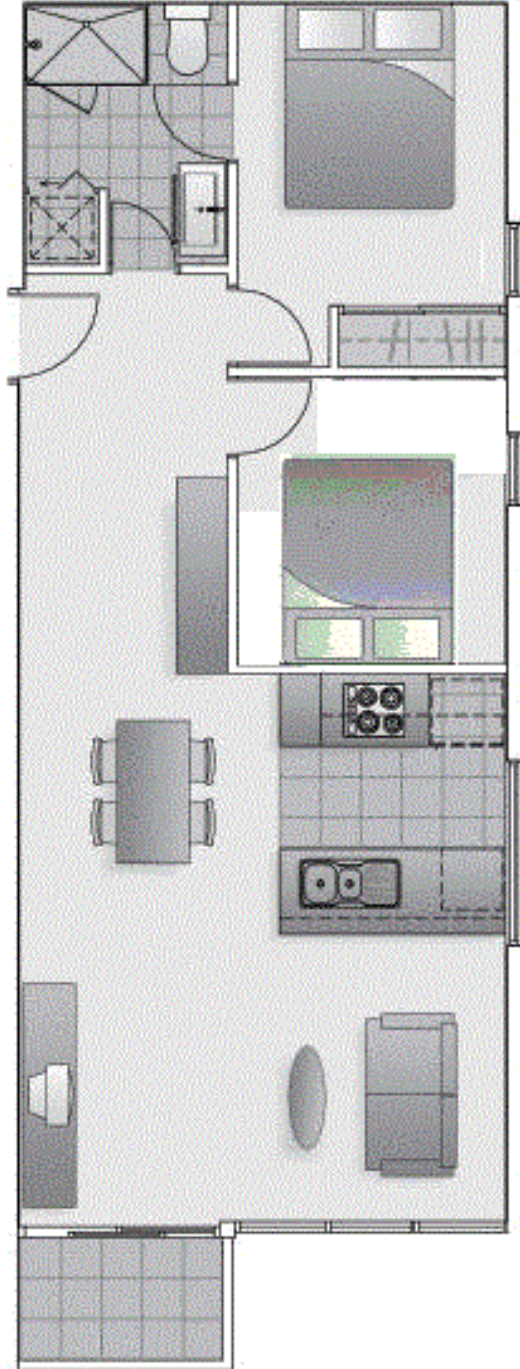
‘109 Clarendon’
109 Clarendon St, Southbank

Property Profile



K113, 63 Turner Street
Port Melbourne VIC 3207
Ph: +61 3 9279 7200
Fax: +61 3 9646 0474
www.corporatekeys.com.au

‘109 Clarendon’
109 Clarendon St, Southbank
Floor Plan



K113, 63 Turner Street
Port Melbourne VIC 3207
Ph: +61 3 9279 7200
Fax: +61 3 9646 0474
www.corporatekeys.com.au