



## 'The Summit' 1908/163 City Road, Southbank



Located in Southbank this fully furnished 3 bedroom 2 bathroom apartment is perfectly positioned to enjoy the best of Melbourne's cultural and entertainment facilities, Southgate and Crown Promenade, as well as quick and easy access to the City's Central Business District and the St Kilda Road tram.



With views across to the city this apartment is city living at its best. The apartment has an open plan living/dining area, European laundry and a fully equipped modern kitchen.

The building has electronic intercom security to screen visitors and security lighting throughout the complex. Recreational facilities include a gymnasium and heated indoor swimming pool.



Weekly rental includes all utility connections and ongoing usage charges, telephone connection, line rental and unlimited local & national telephone calls.



K113, 63 Turner Street  
Port Melbourne VIC 3207  
Ph: +61 3 9279 7200  
Fax: +61 3 9646 0474  
[www.corporatekeys.com.au](http://www.corporatekeys.com.au)

**'The Summit'**  
**1908/163 City Road, Southbank**

**Property Profile**

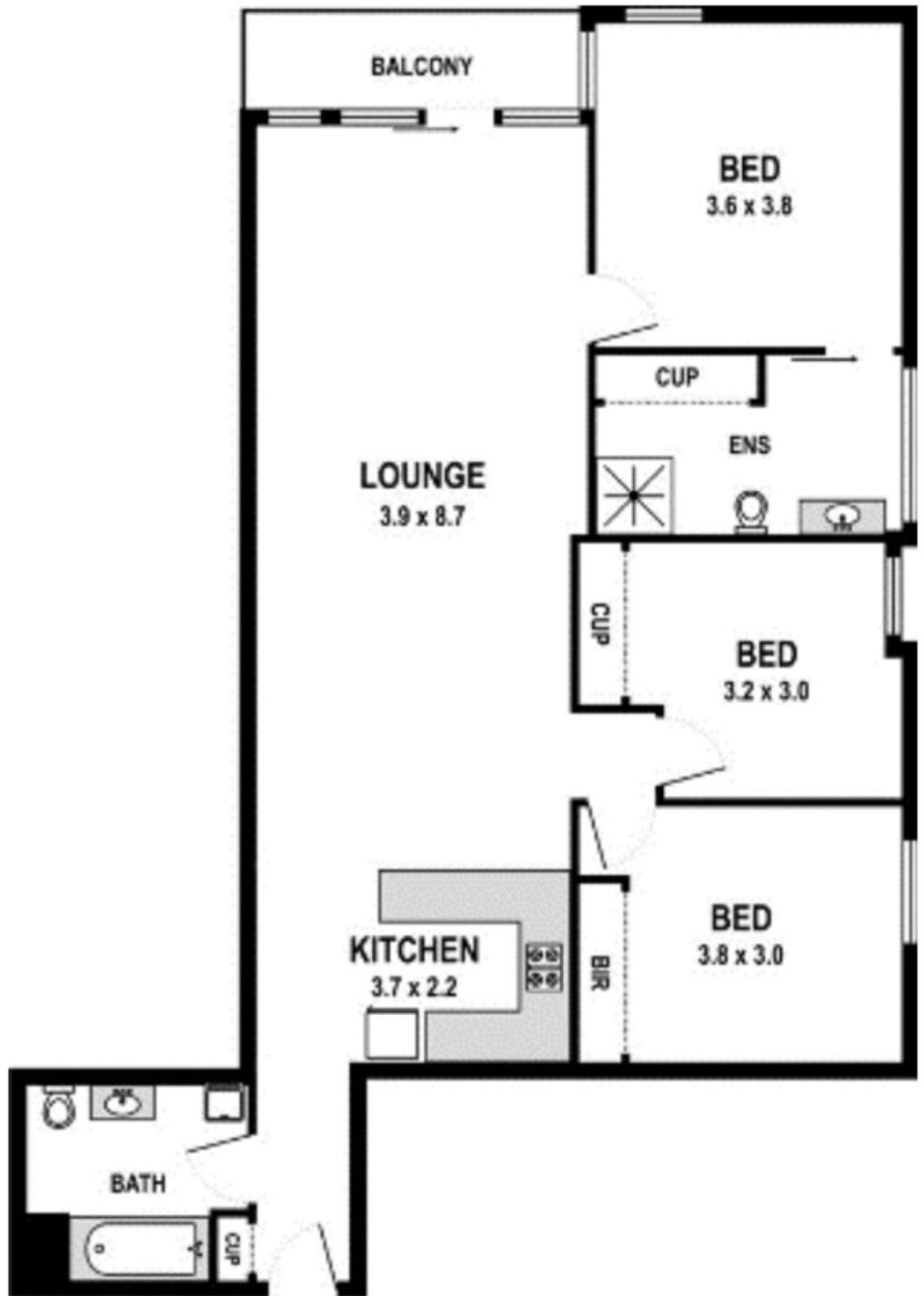


K113, 63 Turner Street  
Port Melbourne VIC 3207  
Ph: +61 3 9279 7200  
Fax: +61 3 9646 0474  
[www.corporatekeys.com.au](http://www.corporatekeys.com.au)



**‘The Summit’  
1908/163 City Road, Southbank  
Floor Plan**

**Property Profile**



K113, 63 Turner Street  
Port Melbourne VIC 3207  
Ph: +61 3 9279 7200  
Fax: +61 3 9646 0474  
[www.corporatekeys.com.au](http://www.corporatekeys.com.au)