

'Elm'

22 Dorcas Street, Southbank

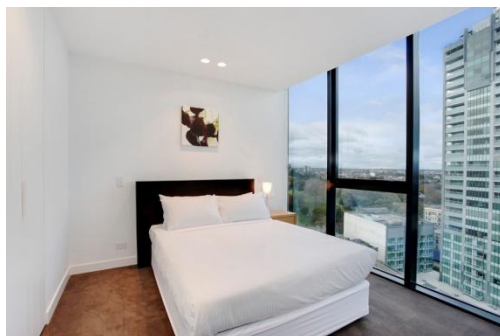
Property Profile

Located only a short walk from St Kilda Road and Melbourne's beautiful Botanic Gardens. Elm - Southbank provides guests with a convenient location to trams, shopping and all things Melbourne. These spacious and bright apartments provide magnificent views over the Melbourne CBD and across towards The Shine of Remembrance.



This fully furnished two bedroom, two bathroom apartment features a modern equipped kitchen with modern Miele stainless steel appliances & stone bench tops.

This tastefully decorated apartment has open plan living/dining, with reverse cycle air conditioning and heating, European laundry and plenty of cupboard space.



K113, 63 Turner Street
 Port Melbourne VIC 3207
 Ph: +61 3 9279 7200
 Fax: +61 3 9646 0474
www.corporatekeys.com.au

Weekly rental includes all utility connections and ongoing usage charges, telephone connection and line rental including unlimited local & national telephone calls.

'Elm'

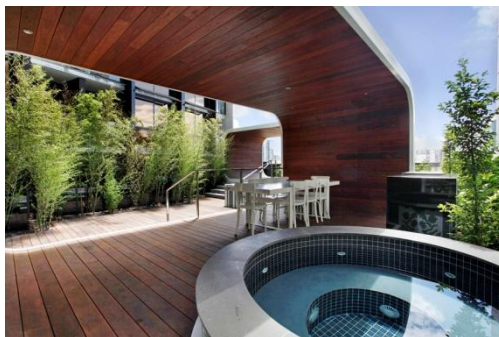
22 Dorcas Street, Southbank

Property Profile

Elm Southbank – Features an innovative podium recreation deck providing a garden area to relax and socialise with entertaining hubs, bbq and gym.



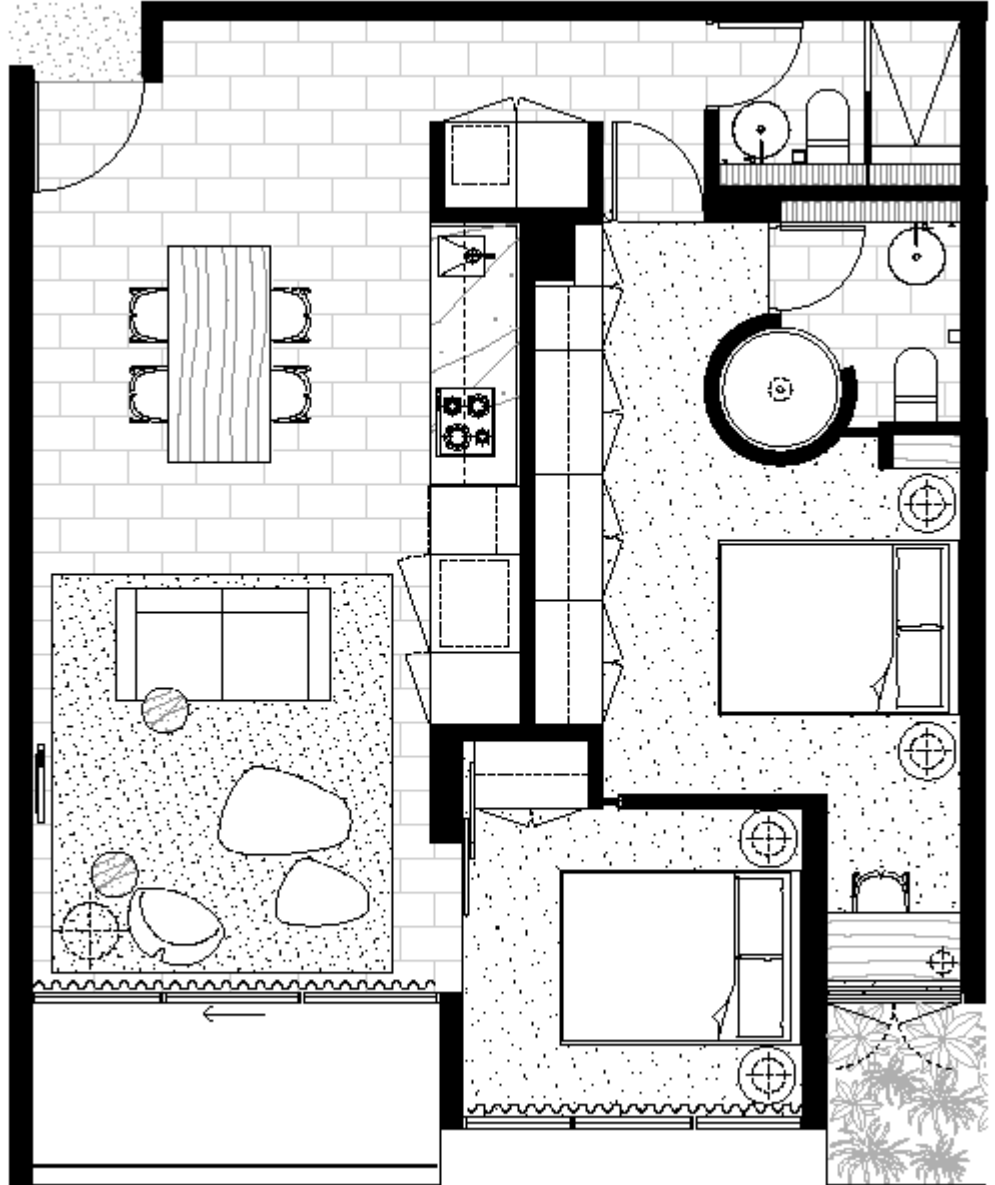
Enjoy the amazing facilities available including a gym, swimming pool and a choice of one of the two spas.



K113, 63 Turner Street
Port Melbourne VIC 3207
Ph: +61 3 9279 7200
Fax: +61 3 9646 0474
www.corporatekeys.com.au

'Elm'
22 Dorcas Street, Southbank

Property Profile



K113, 63 Turner Street
Port Melbourne VIC 3207
Ph: +61 3 9279 7200
Fax: +61 3 9646 0474
www.corporatekeys.com.au