

## 'Eureka Tower' Riverside Quay, Southbank



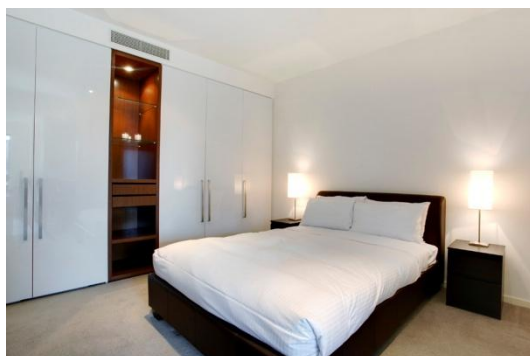
Located just moments away from Southbank Promenade restaurants, cafes and shops, the Arts Centre, Royal Botanic Gardens, Federation Square and St Kilda Road, Eureka Tower brings world-class living to the heart of Melbourne.



This brand new apartment is tastefully furnished and include a luxury kitchen with European appliances, one bedroom with built in robes and access to the main bathroom. This superb apartment also separate laundry and open plan living with access to a balcony with views of the Yarra River and Melbourne CBD skyline.



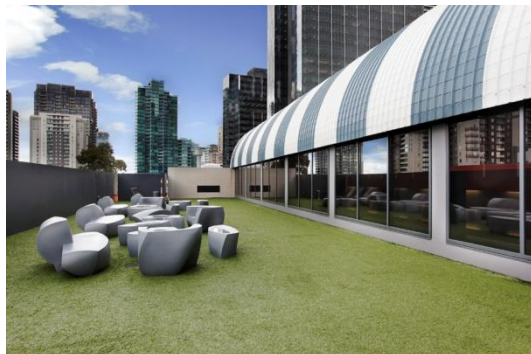
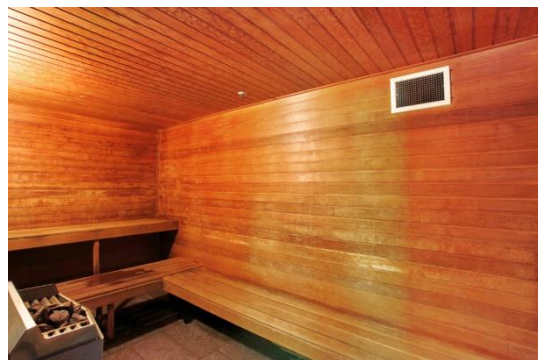
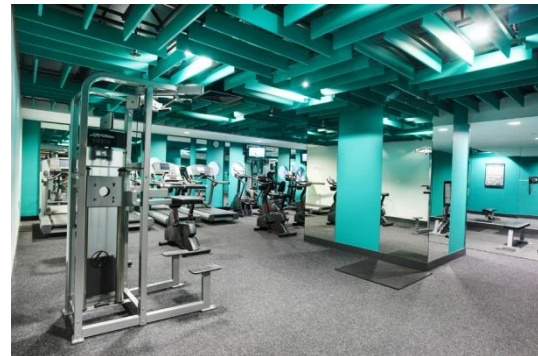
This residential complex has excellent security, including video phone and restricted floor access, 24-hour security and on-site concierge. The building features a 25-metre lap pool, fully equipped gymnasium, a sauna and a private 30-seat cinema.



K113, 63 Turner Street  
Port Melbourne VIC 3207  
Ph: +61 3 9279 7200  
Fax: +61 3 9646 0474  
[www.corporatekeys.com.au](http://www.corporatekeys.com.au)

## ‘Eureka Tower’ 7 Riverside Quay, Southbank

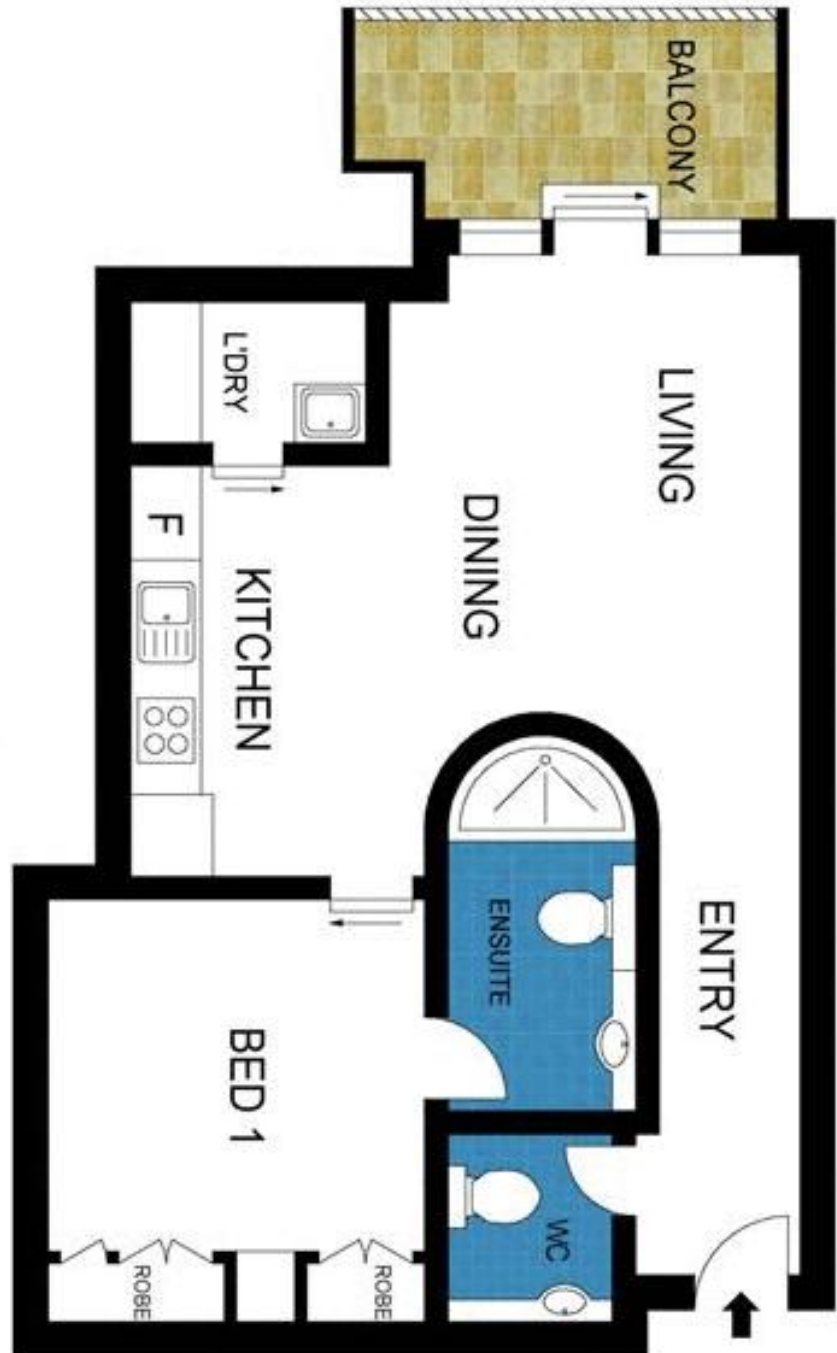
# Property Profile



K113, 63 Turner Street  
Port Melbourne VIC 3207  
Ph: +61 3 9279 7200  
Fax: +61 3 9646 0474  
[www.corporatekeys.com.au](http://www.corporatekeys.com.au)

# Property Profile

## 'Eureka Tower' 7 Riverside Quay, Southbank



K113, 63 Turner Street  
Port Melbourne VIC 3207  
Ph: +61 3 9279 7200  
Fax: +61 3 9646 0474  
[www.corporatekeys.com.au](http://www.corporatekeys.com.au)