

lilli

12-14 Claremont Street, South Yarra



Bordered by the picturesque Yarra River, adjoining the popular suburbs of Prahran and Toorak, and overlooking the green oasis of Fawkner Park, is one of Melbourne’s most affluent and tightly held inner-city suburbs – South Yarra. These spacious and bright apartments provide views of the Melbourne.



This brand new luxury 1 bedroom apartment was only completed in September 2011. The kitchen comprises of a galley style kitchen with Miele stainless steel appliances including gas cook top, under bench oven and dish draw dishwasher, caeser stone bench tops. A bright lounge/dining area also opens up to a spacious balcony which features an inbuilt B.B.Q & bench seating.



Each bedroom includes floor to ceiling built-in robes. The spacious bathrooms include floor to ceiling tiling, large shower, and separate Euro laundry. lilli residents will also benefit from video security and a onsite building manager.



K113, 63 Turner Street
 Port Melbourne VIC 3207
 Ph: +61 3 9279 7200
 Fax: +61 3 9646 0474
www.corporatekeys.com.au

lilli
12-14 Claremont Street, South Yarra



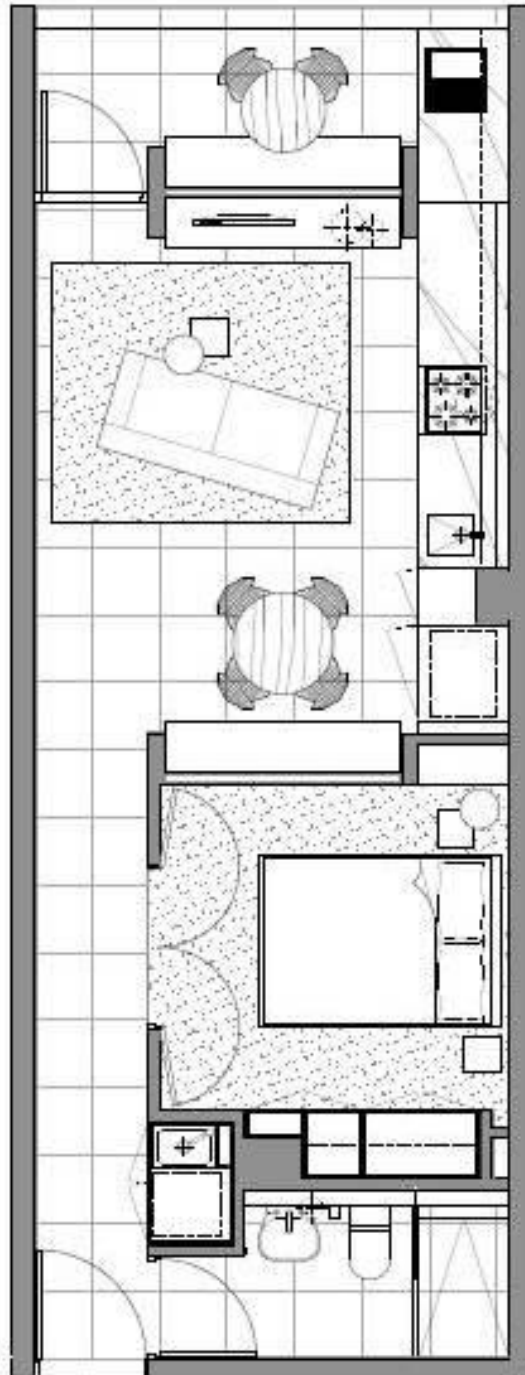
lilli's new laneway will connect with the renowned Chapel Street precinct which offers an enticing mix of high end fashion retailers, renowned restaurants and cafes and the popular Jam Factory entertainment complex.

South Yarra allows easy access to all inner-city Melbourne has to offer. Catch the tram or walk to the nearby Prahran Market, travel two stops by train to Melbourne's CBD or cycle through the local parkland which features a network of pathways, complete with panoramic views of the city and riverfront.



K113, 63 Turner Street
Port Melbourne VIC 3207
Ph: +61 3 9279 7200
Fax: +61 3 9646 0474
www.corporatekeys.com.au

lilli Floor Plan



K113, 63 Turner Street
Port Melbourne VIC 3207
Ph: +61 3 9279 7200
Fax: +61 3 9646 0474
www.corporatekeys.com.au