

## ‘Eureka Tower’ Riverside Quay, Southbank

# Property Profile



Located just moments away from Southbank Promenade restaurants, cafes and shops, the Arts Centre, Royal Botanic Gardens, Federation Square and St Kilda Road, Eureka Tower brings world-class living to the heart of Melbourne.



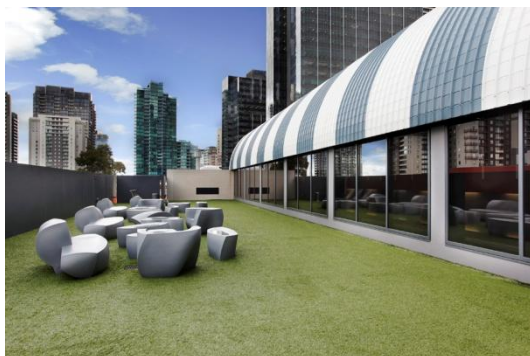
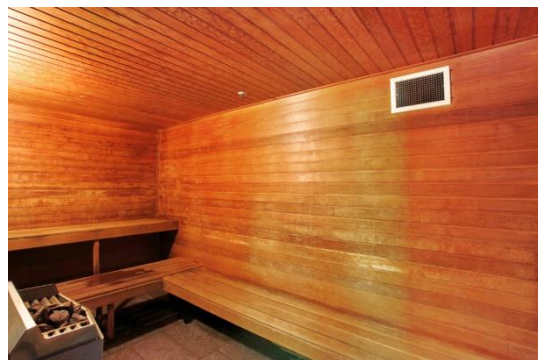
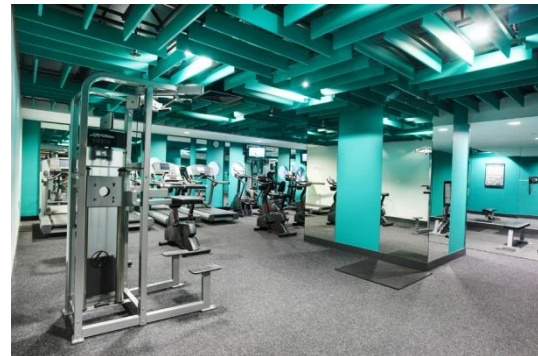
This brand new apartment is tastefully furnished and include a luxury kitchen with European appliances, one bedroom with built in robes and access to the main bathroom. This superb apartment also separate laundry and open plan living with access to a balcony.

This residential complex has excellent security, including video phone and restricted floor access, 24-hour security and on-site concierge. The building features a 25-metre lap pool, fully equipped gymnasium, a sauna and a private 30-seat cinema.



K113, 63 Turner Street  
Port Melbourne VIC 3207  
Ph: +61 3 9279 7200  
Fax: +61 3 9646 0474  
[www.corporatekeys.com.au](http://www.corporatekeys.com.au)

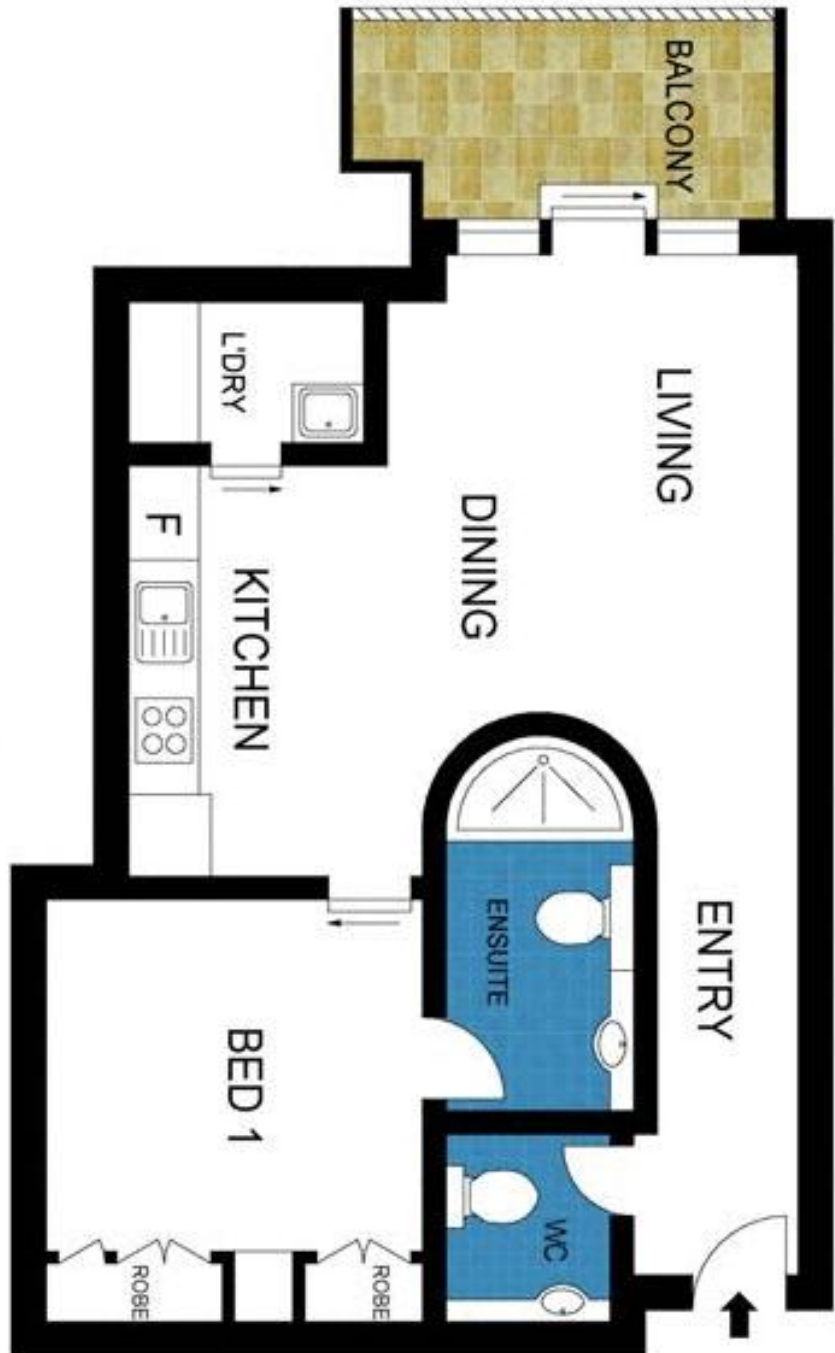
## 'Eureka Tower' 7 Riverside Quay, Southbank



K113, 63 Turner Street  
Port Melbourne VIC 3207  
Ph: +61 3 9279 7200  
Fax: +61 3 9646 0474  
[www.corporatekeys.com.au](http://www.corporatekeys.com.au)

# Property Profile

## 'Eureka Tower' 7 Riverside Quay, Southbank



K113, 63 Turner Street  
Port Melbourne VIC 3207  
Ph: +61 3 9279 7200  
Fax: +61 3 9646 0474  
[www.corporatekeys.com.au](http://www.corporatekeys.com.au)