

‘Elm’

22 Dorcas Street, Southbank



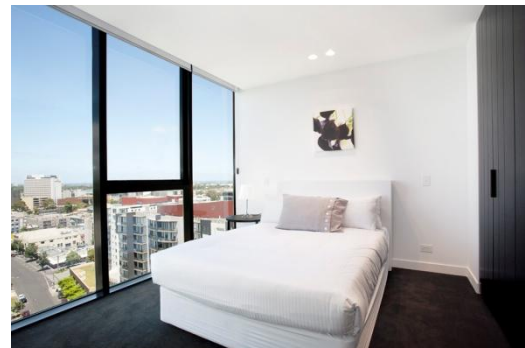
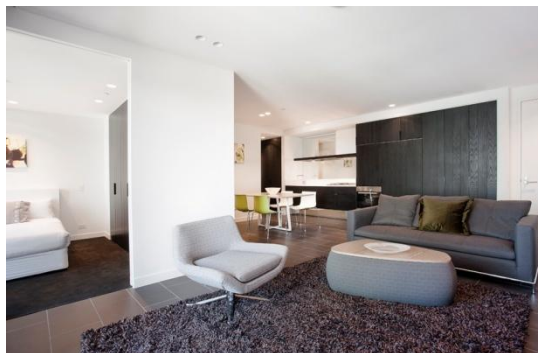
Located only a short walk from St Kilda Road and Melbourne's beautiful Botanic Gardens. Elm - Southbank provides guests with a convenient location to trams, shopping and all things Melbourne. These spacious and bright apartments provide views of the Melbourne CBD and views across towards the bay.

Property Profile



This fully furnished two bedroom, two bathroom apartment features a modern equipped kitchen with modern Miele stainless steel appliances & stone bench tops.

This tastefully decorated apartment has open plan living/dining, with reverse cycle air conditioning and heating, European laundry and plenty of cupboard space.



K113, 63 Turner Street
Port Melbourne VIC 3207
Ph: +61 3 9279 7200
Fax: +61 3 9646 0474
www.corporatekeys.com.au

Ref: Elm
Property Rating: Business Class

Weekly rental includes all utility connections and ongoing usage charges, telephone connection and line rental including unlimited local & national telephone calls.

'Elm'

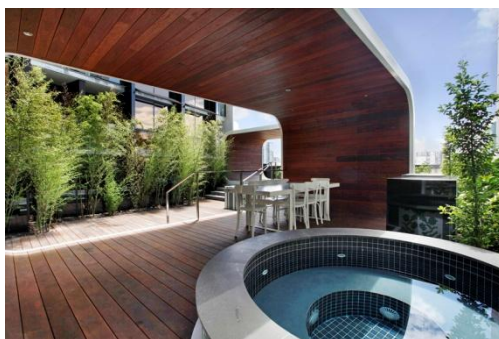
22 Dorcas Street, Southbank

Property Profile

Elm Southbank – Features an innovative podium recreation deck providing a garden area to relax and socialise with entertaining hubs, bbq and gym.



Enjoy the amazing facilities available including a gym, swimming pool and a choice of one of the two spas.

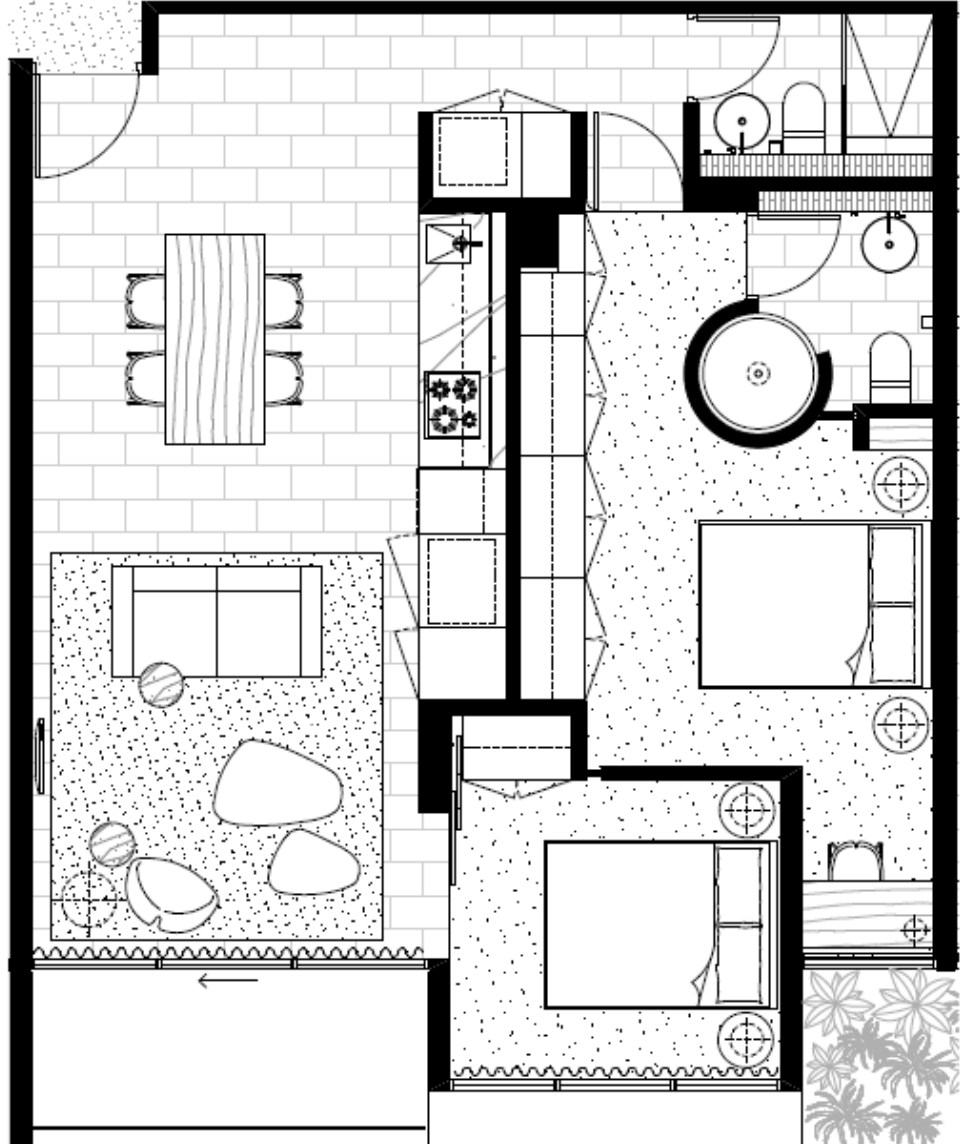


K113, 63 Turner Street
Port Melbourne VIC 3207
Ph: +61 3 9279 7200
Fax: +61 3 9646 0474
www.corporatekeys.com.au



'Elm'
22 Dorcas Street, Southbank

Property Profile



K113, 63 Turner Street
Port Melbourne VIC 3207
Ph: +61 3 9279 7200
Fax: +61 3 9646 0474
www.corporatekeys.com.au