

'Freshwater' 1 Freshwater Place, Southbank



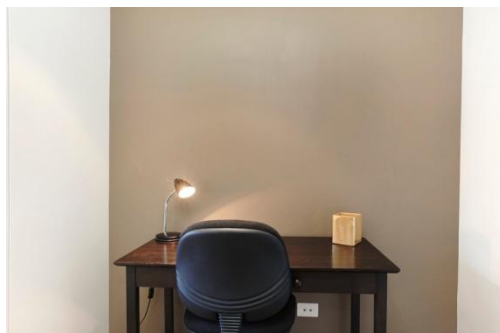
Freshwater Place's riverfront position is one of the best in Melbourne. Located on the southern bank of the Yarra River between Southgate and the Crown Entertainment Complex, these apartments provide magnificent views over the river & Docklands.



This new luxury apartment is superbly furnished and includes a modern kitchen with European appliances, one bedroom with en-suite and an open-plan living area.

The building features a pool, fully equipped gymnasium, sauna, spa, steam room, massage room, BBQ area, ½ acre garden and fully equipped business centre. Secure car parking is available.

This residential complex has excellent security including video phone and restricted floor access, 24 hour security and on site concierge.



K113, 63 Turner Street
Port Melbourne VIC 3207
Ph: +61 3 9279 7200
Fax: +61 3 9646 0474
www.corporatekeys.com.au

Ref: 1510
Property Rating: First Class

Weekly rental includes all utility connections and ongoing usage charges, telephone connection and line rental including unlimited local & national telephone calls.

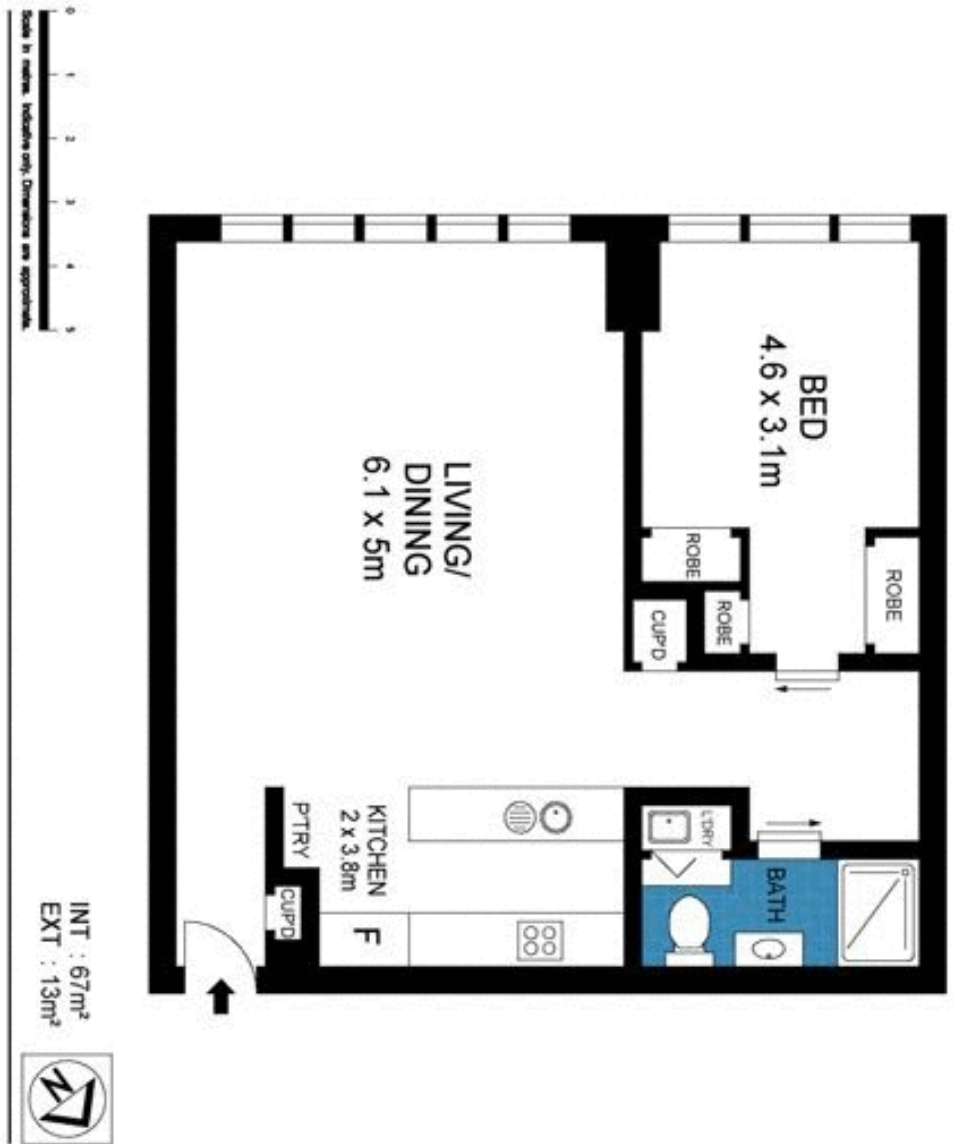
‘Freshwater’
1 Freshwater Place, Southbank



K113, 63 Turner Street
Port Melbourne VIC 3207
Ph: +61 3 9279 7200
Fax: +61 3 9646 0474
www.corporatekeys.com.au

‘Freshwater’
1 Freshwater Place, Southbank

Property Profile



K113, 63 Turner Street
Port Melbourne VIC 3207
Ph: +61 3 9279 7200
Fax: +61 3 9646 0474
www.corporatekeys.com.au