

'The Summit' 163 City Road, Southbank

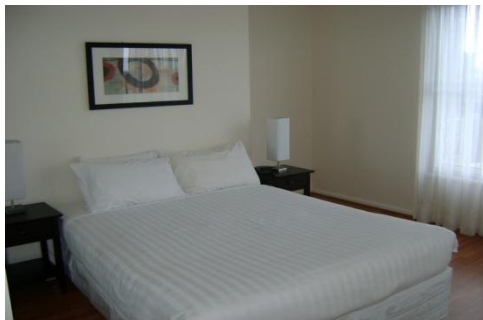


Located in Southbank this fully furnished 2 bedroom 1 bathroom apartment is perfectly positioned to enjoy the best of Melbourne's cultural and entertainment facilities, Southgate and Crown Promenade, as well as quick and easy access to the City's Central Business District and the St Kilda Road tram.



With views across to the city this apartment is city living at its best. The apartment has an open plan living/dining area, 2 bedrooms, one bathroom with European laundry and a fully equipped modern kitchen.

The building has electronic intercom security to screen visitors and security lighting throughout the complex. Recreational facilities include a gymnasium and heated indoor swimming pool.



K113, 63 Turner Street
Port Melbourne VIC 3207
Ph: +61 3 9279 7200
Fax: +61 3 9646 0474
www.corporatekeys.com.au