

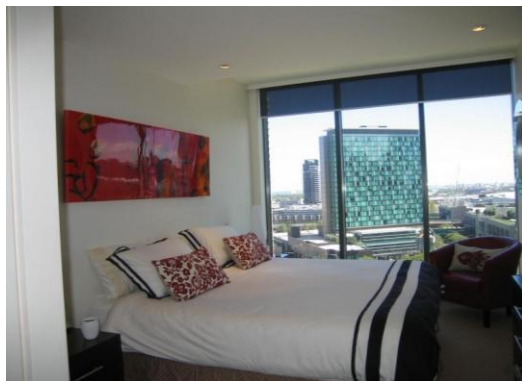
'Freshwater' 1212/1 Freshwater Place, Southbank



Freshwater Place's riverfront position is one of the best in Melbourne. Located on the southern bank of the Yarra River between Southgate and the Crown Entertainment Complex, these apartments provide magnificent views over Melbourne.



This new luxury apartment is superbly furnished and includes a modern galley kitchen with European appliances, one bedroom with en-suite and an open-plan living area.



The building features a pool, fully equipped gymnasium, sauna, spa, steam room, massage room, BBQ area, ½ acre garden and fully equipped business centre.



K113, 63 Turner Street
Port Melbourne VIC 3207
Ph: +61 3 9279 7200
Fax: +61 3 9646 0474
www.corporatekeys.com.au

Ref: 1212
Property Rating:
Business Class

Weekly rental includes all utility connections and ongoing usage charges, telephone connection and line rental including unlimited local & national telephone calls.

'Freshwater'
1 Freshwater Place, Southbank



K113, 63 Turner Street
Port Melbourne VIC 3207
Ph: +61 3 9279 7200
Fax: +61 3 9646 0474
www.corporatekeys.com.au