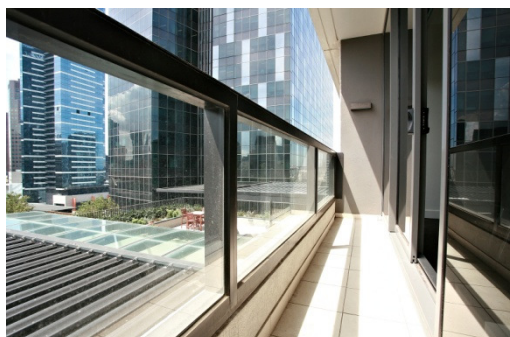


## 'Freshwater' 1 Freshwater Place, Southbank



This luxury apartment is superbly furnished and includes a modern kitchen with European appliances, one bedroom plus a study/guest room with a fold out bed, bathroom with European laundry and an open-plan living area allowing you to step out onto the balcony to enjoy views over the Yarra River to the city. The building features a pool, fully equipped gymnasium, sauna, spa, steam room, massage room, BBQ area, ½ acre garden and fully equipped business centre. Secure car parking is available.

This residential complex has excellent security including video phone and restricted floor access, 24 hour security and on-site concierge.



Freshwater Place's riverfront position is one of the best in Melbourne. Located on the southern bank of the Yarra River between Southgate and the Crown Entertainment Complex, these apartments provide magnificent views over the river, city and Melbourne's parks and gardens.



K113, 63 Turner Street  
Port Melbourne VIC 3207  
Ph: +61 3 9279 7200  
Fax: +61 3 9646 0474  
[www.corporatekeys.com.au](http://www.corporatekeys.com.au)

Ref: 1203  
Property Rating: Business Class

Weekly rental includes all utility connections and ongoing usage charges, telephone connection, line rental & local telephone calls.

**‘Freshwater’**  
**1 Freshwater Place, Southbank**

**Property Profile**



K113, 63 Turner Street  
Port Melbourne VIC 3207  
Ph: +61 3 9279 7200  
Fax: +61 3 9646 0474  
[www.corporatekeys.com.au](http://www.corporatekeys.com.au)

Ref: 1203  
Property Rating: Business Class