

'Vue Grande' 63 Whiteman St, Southbank



Vue Grande situated on Whiteman Street is within easy walking distance of Melbourne's CBD, Yarra River, Southbank restaurants and shop precinct, Crown Casino and Docklands.



When space, location and quality are important then this one bedroom apartment located in Vue Grande provides all of those needs. Located on the 12th floor with magnificent views of the lights of the CBD and Crown Casino this apartment offers an open plan living opening up to the balcony, master bedroom with large wardrobe and a well equipped modern kitchen.



Benefits also include heated indoor swimming pool, well equipped gym, and access to the terrace with a inbuilt BBQ.



This residential complex has advanced security including video intercom, digital video security system, concierge desk and restricted floor access cards.



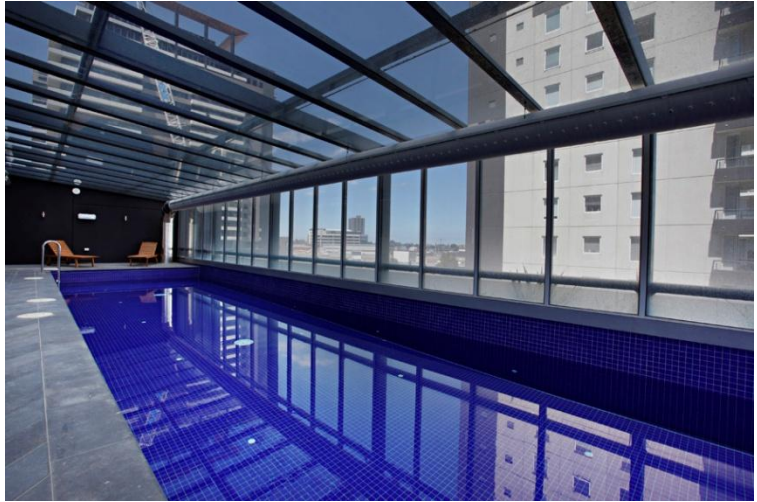
K113, 63 Turner Street
Port Melbourne VIC 3207
Ph: +61 3 9279 7200
Fax: +61 3 9646 0474
www.corporatekeys.com.au

Ref: 1200

Property Rating: Business Class

Weekly rental includes all utility connections and ongoing usage charges, telephone connection and line rental including unlimited local & national telephone calls.

**‘Vue Grande’
63 Whiteman St, Southbank**

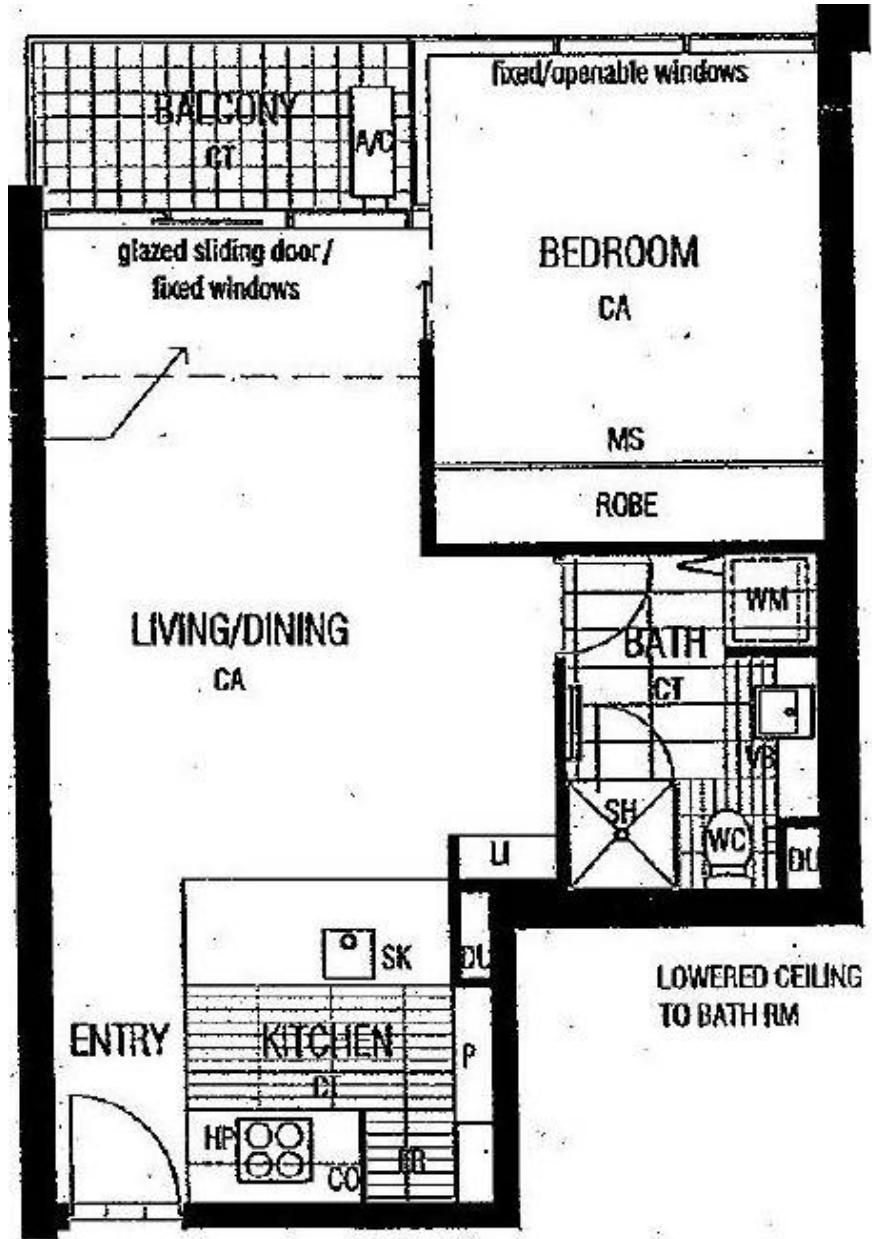


K113, 63 Turner Street
Port Melbourne VIC 3207
Ph: +61 3 9279 7200
Fax: +61 3 9646 0474
www.corporatekeys.com.au

Ref: 1200
Property Rating: Business Class

'Vue Grande'
63 Whiteman St, Southbank

Property Profile



K113, 63 Turner Street
 Port Melbourne VIC 3207
 Ph: +61 3 9279 7200
 Fax: +61 3 9646 0474
www.corporatekeys.com.au