

'Flinders Wharf' 60 Siddeley Street, Melbourne

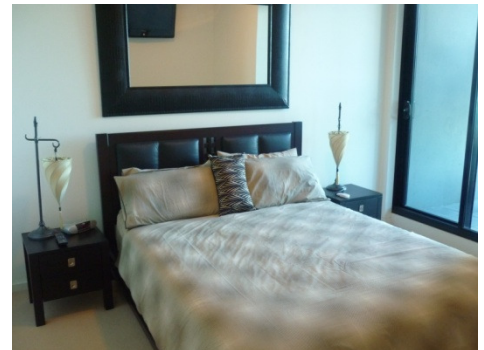


Situated on the banks of the Yarra River, the Flinders Wharf residential complex is located next to the World Trade Centre on Spencer Street and has easy access to Melbourne's CBD, Southbank restaurants and shops, Crown Casino and Docklands.



With two bedrooms, master with en-suite, and an open plan living area with views onto the Yarra River, this apartment has inner city convenience with the indulgence of water views. The modern kitchen features gas cooking and dishwasher, and the apartment has one bathroom with internal laundry.

The building features a heated swimming pool and well equipped gymnasium. This residential complex has advanced security including video intercom, digital video security system and restricted floor access card.



Weekly rental includes all utility connections and ongoing usage charges, telephone connection, line rental, local telephone calls.