

## 150 Peel Street, North Melbourne



Situated on the city fringe, this new apartment is located only a few minutes walk to Queen Victoria Market and the Flagstaff Gardens.

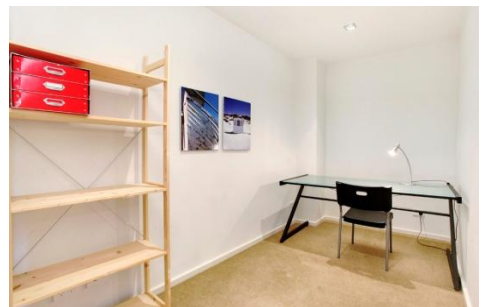
This first floor apartment has two bedrooms, a separate study, spacious open plan living area opening to a large east facing balcony with city views.

The master bedroom has built-in robes with a separate study alcove. The modern kitchen is well equipped with granite bench tops and dishwasher.



The apartment also features air-conditioning, a separate laundry, a bath and a separate powder room.

The residential complex has security access. Secure undercover parking is available at extra cost.



# Property Profile

## 150 Peel Street, North Melbourne



K113, 63 Turner Street  
Port Melbourne VIC 3207  
Ph: +61 3 9279 7200  
Fax: +61 3 9646 0474  
[www.corporatekeys.com.au](http://www.corporatekeys.com.au)