

'Mondriane' 280 Spencer Street, Melbourne



Located in Melbourne's Central Business District, the Mondriane Apartments on Spencer Street are only a few minutes from the Southern Cross Railway Station and a short tram ride to the heartland of the city shopping.

With cafés, restaurants and shopping at your doorstep, these apartments offer convenience and lifestyle.



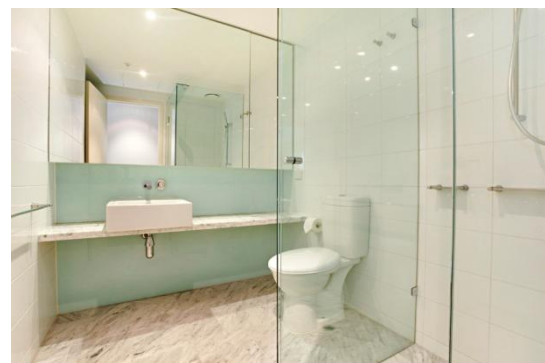
Tastefully presented, this fully furnished one-bedroom apartment comprises a master bedroom with built in robes, bathroom and an open plan living/dining area opening out onto a private balcony.

The galley kitchen features an additional roll-away marble topped bench, dishwasher and gas cooking.



A European laundry and air conditioning ensure every comfort is catered for.

This residential apartment complex has a security entrance and a 20 metre pool and gymnasium located on the 25th floor.



K113, 63 Turner Street
Port Melbourne VIC 3207
Ph: +61 3 9279 7200
Fax: +61 3 9646 0474
www.corporatekeys.com.au